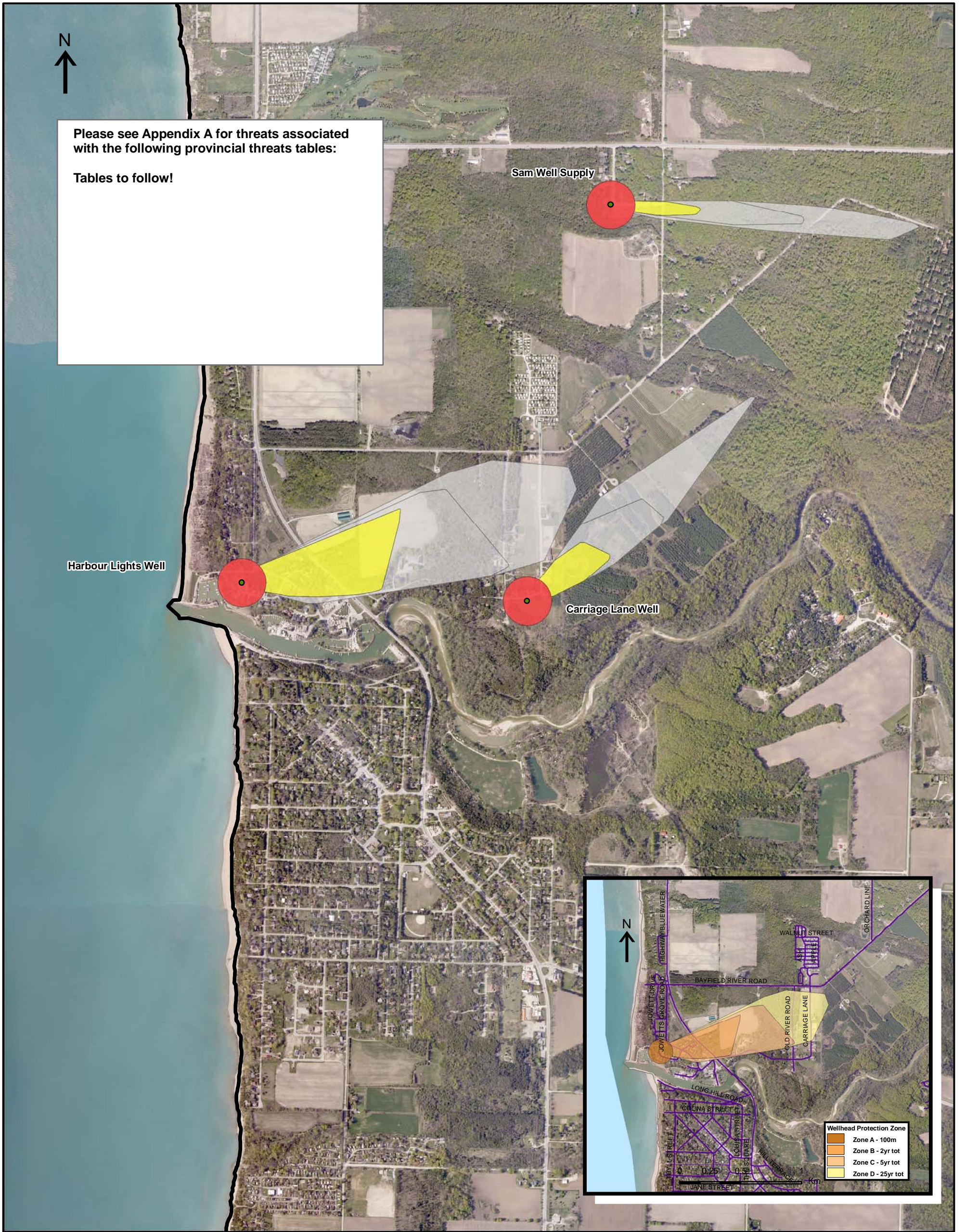




Please see Appendix A for threats associated with the following provincial threats tables:

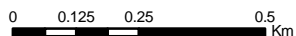
Tables to follow!



Map 4.32 Areas Where Chemical Threats Can Be Significant, Moderate or Low Harbour Lights System

**LEGEND**

- Conservation Authority
- Entire WHPA Capture Zone
- Municipal Well
- WHPA Threat Area GWVA**
- 10
- 8
- 6
- Century Heights GUDI Threat Area GWVA**
- 7.2
- IPZ Threat Area GWVA**
- 6
- 5.4
- 5



Photos from First Base Solutions



Ausable Bayfield & Maitland Valley Source Protection Region

**Map 4.32 Areas Where Chemical Threats Can Be Significant, Moderate or Low Harbour Lights System**



ABCAMVCA GIS Services  
Copyright (c) Queen's Printer, 2009  
This map is for illustrative purposes only, it is not a legal survey.

C:\swp\small\_projects\bmross\whpa\_database\_threats\whpa\_chem\_harbour\_lights\_v9.mxd  
Date: November 10, 2009  
Produced By: Darrell Innes ABCA/MVCA DWSP Region