

460000



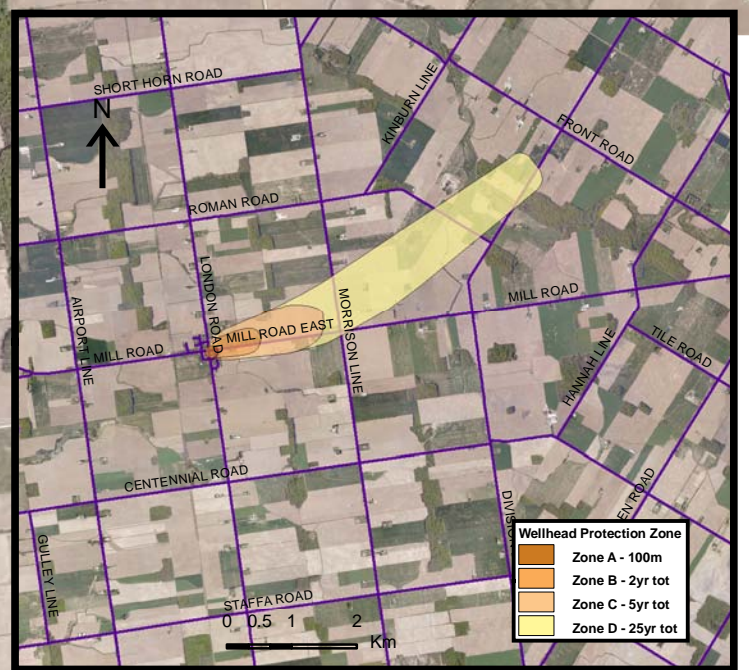
Please see Appendix A for threats associated with the following provincial threats tables:

Tables to follow!

Brucefield Well Supply



4820000

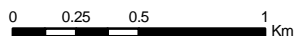


460000

Map 4.18 Areas Where Chemical Threats Can Be Significant, Moderate or Low Brucefield System

### LEGEND

- Conservation Authority
- Entire WHPA Capture Zone
- Municipal Well
- WHPA Threat Area GWVA**
- 10
- 8
- 6
- Century Heights GUDI Threat Area GWVA**
- 7.2
- IPZ Threat Area GWVA**
- 6
- 5.4
- 5



Photos from First Base Solutions



Ausable Bayfield & Maitland Valley Source Protection Region

## Map 4.18 Areas Where Chemical Threats Can Be Significant, Moderate or Low Brucefield System



ABCAMVCA GIS Services  
Copyright (c) Queen's Printer, 2009  
This map is for illustrative purposes only, it is not a legal survey.

C:\swp\small\_projects\bmross\whpa\_database\_threats\whpa\_chem\_brucefield\_v9.mxd  
Date: November 10, 2009  
Produced By: Darrell Innes ABCA/MVCA DWSP Region