



**AUSABLE BAYFIELD MAITLAND VALLEY  
SOURCE PROTECTION REGION**

**SOURCE PROTECTION COMMITTEE**

**Proposed  
TERMS OF REFERENCE**

**July 30, 2008**

***Proposed Document FOR Comment***

**[www.sourcewaterinfo.on.ca](http://www.sourcewaterinfo.on.ca)**

## Table of Contents

### List of Maps, Figures, Tables and Appendices

#### Executive Summary

<b>1.0</b>	<b>Background.....</b>	<b>2</b>
<b>2.0</b>	<b>Introduction .....</b>	<b>2</b>
<b>3.0</b>	<b>The Source Protection Region .....</b>	<b>4</b>
3.1	The Ausable Bayfield Source Protection Area .....	5
3.2	The Maitland Valley Source Protection Area .....	7
<b>4.0</b>	<b>Scope of Work.....</b>	<b>11</b>
4.1	Project Management.....	11
4.2	Communications and Information Management .....	11
4.3	Roles & Responsibilities .....	12
4.4	Assessment Report(s) .....	13
4.5	Source Protection Plans .....	13
<b>5.0</b>	<b>List of Matters that Affect Other Source Protection Committees.....</b>	<b>14</b>

5.1	Regional Groundwater Flow and Vulnerability Mapping .....	15
5.2	Shared Municipalities .....	15
5.3	Great Lakes Agreements.....	15

### **List of Maps, Figures, Tables and Appendices**

<b>Map 1</b>	<b>ABMV Source Protection Region .....</b>	<b>Attached</b>
<b>Map 2</b>	<b>Ausable Bayfield Source Protection Area.....</b>	<b>Attached</b>
<b>Map 3</b>	<b>Maitland Valley Source Protection Area .....</b>	<b>Attached</b>
<b>Figure 1</b>	<b>Timeline for Source Protection Products .....</b>	<b>4</b>
<b>Figure 2</b>	<b>Scope of Work .....</b>	<b>4</b>
<b>Figure 3</b>	<b>Source Protection Multi-year Schedule .....</b>	<b>16</b>

<b>Table 1</b>	<b>Municipal Drinking Water Systems – Ausable Bayfield Source Protection Area .....</b>	<b>5</b>
<b>Table 2</b>	<b>Municipal Drinking Water Systems in the Maitland Valley Source Protection Area .....</b>	<b>7</b>
<b>Appendix A</b>	<b>Scope of Work: Assessment Report(s).....</b>	
<b>Appendix B</b>	<b>Scope of Work: Source Protection Plans .....</b>	

## Executive Summary

The *Clean Water Act, 2006* impacts municipalities, conservation authorities, and watershed residents. It requires that Source Protection Plans be locally written, approved by the Ontario Minister of the Environment and implemented by municipalities. Based on the known requirements and municipal feedback to date, this document is the draft proposed Terms of Reference for the Ausable Bayfield Maitland Valley (ABMV) Source Protection Region. This Terms of Reference includes the allocation of tasks required to:

- Identify drinking water risks;
- Develop the Assessment Report(s)
- Create Source Protection Plans, which will address risk and be implemented locally.

In keeping with the guidance issued under the *Clean Water Act, 2006* the **Terms of Reference** is a work plan that outlines:

1. Scope of work (what tasks completed by whom)
2. Costs and other resources required;
3. Timelines for developing the **Assessment Report(s)** and **Source Protection Plans**.

**Assessment Reports:** are summaries of water quality and quantity risks in the ABMV Source Protection Region; and

**Source Protection Plans:** are policy documents, which are action plans for eliminating, reducing, and managing water quantity and quality risks in the ABMV Source Protection Region.

The Source Protection Committee (SPC) circulated the terms of reference to municipalities, working groups, First Nations, and conservation authorities. All municipal residential drinking water systems are currently being studied by the Source Protection Committee in cooperation with local municipalities. This document summarizes the work to date, and proposes high level tasks required to complete the Source Protection Plans.

**Note:** *The Ontario Ministry of the Environment has not released regulations on the Source Protection Plans. Once these regulations are developed, the Terms of Reference may require amendment.*

## 1.0 Background

The *Clean Water Act, 2006* (CWA) was brought into effect with the passing of the first set of regulations on July 3, 2007. The legislation and associated regulations puts in place a framework for establishing a Source Protection Committee (SPC) and geographic study areas called Source Protection Regions (SPR) and Source Protection Areas (SPA). The SPC has the responsibility to guide the development of source protection plans for each of the SPAs within their respective SPR. The purpose of this legislation is to provide a comprehensive study of many watersheds in the province with the end goal of producing source protection plans, which will outline scientific approaches to managing water quality and quantity risks for drinking water supplies. The *Act* and Regulations make protecting municipal sources of drinking water the main priority of source protection planning.

The first step for the SPC to prepare the source protection plans is to develop a comprehensive work plan that will outline the technical studies required, the cost and who will perform the work. The first set of regulations passed under the CWA refers to this work plan as a Terms of Reference (ToR). Regulation 287/07 outlines the requirements for how to develop the ToR, the content and the minimum consultation requirements to get local input included.

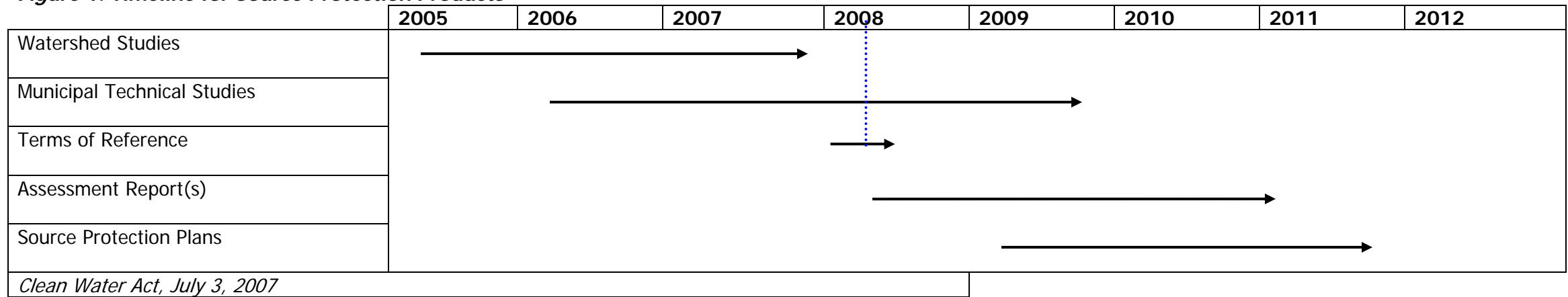
Prior to the CWA, local municipalities and conservation authorities had been promoting and implementing source water protection for decades. Through watershed studies, landowner incentive programs and regional partnerships for water resource management, a significant wealth of information and progress has been made at the local level to protect our watersheds. Therefore, as the SPC develops a work plan for source protection plans, it is imperative that this new governance structure builds on the success and momentum of existing partnerships and watershed initiatives.

## 2.0 Introduction

This document represents the ToR for developing two source protection plans for the ABMV Source Protection Region (Map 1). The Ausable Bayfield Source Protection Area and the Maitland Valley Source Protection Area together comprise a region that is over 5725 km<sup>2</sup>. The ToR begins with a focus on the SPR and the common elements that need to be studied and included in both source protection plans. For example, groundwater movement within the region is not necessarily restricted to the boundaries of surface watersheds so it is important to examine regional information. Likewise, each SPA contains distinct municipal residential drinking water systems that must be studied to identify potential drinking water risks. Therefore, the ToR will draw upon the local information requirements specific to each SPA.

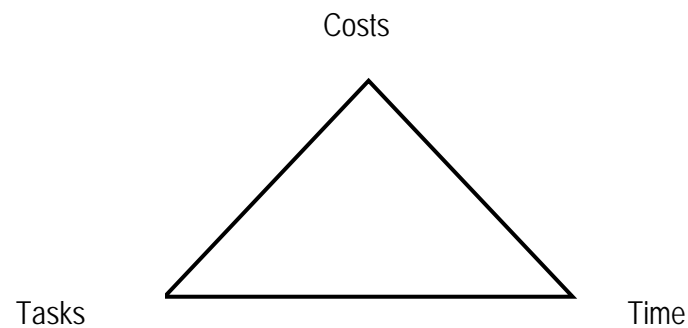
As outlined in Figure 1, the content of the ToR needs to focus on two principal products: 1) the Assessment Report(s) and 2) the Source Protection Plans. The tasks required to complete each of these products started before the CWA was enacted. The Ontario Ministry of the Environment (MOE) and the Ontario Ministry of Natural Resources have provided funding since 2005 to initiate watershed and technical studies that would integrate into the assessment report(s) and ultimately into source protection plans.

**Figure 1. Timeline for Source Protection Products**



In order to establish the work plan for developing the assessment report(s) and the source protection plans, the SPC needs to consider what work has been completed, initiated or is required. Figure 2 represents the three components that need to be addressed to establish the work plan. The inherent challenge is to balance the triangle so the work proposed is achievable and realistic goals are set.

**Figure 2. Scope of Work**



The following sections of the ToR outline each of the components shown in Figure 2 for the key deliverables required for both the source protection region and the two source protection areas.

### **3.0 The Source Protection Region**

Of the 19 SPRs in the province of Ontario, the ABMV SPR is one of three that is bounded to the west by Lake Huron (extending to the international boundary with the United States). It is bordered by the Saugeen, Grey-Sauble, and Northern Bruce Peninsula SPR to the north, and the remaining boundaries are abutted by the Lake Erie and Thames Sydenham and Region SPRs. While there are no First Nations reservations within the ABMV SPR, there is the Stony Point claim in the Ipperwash area and other First Nations claims to the bed of Lake Huron. While multifaceted, these jurisdictional issues are not as complex as those faced by other SPRs.

Within the ABMV SPR, there are 24 lower tier and 6 upper tier municipalities. These municipalities rely on a combination of surface water and groundwater sources for drinking water, with approximately 35% of the SPR's population relying on individual wells to supply their drinking water. In addition, there are more than 100 non-municipal drinking water sources serving a variety of public and private user groups.

### **3.1 The Ausable Bayfield Source Protection Area**

Consisting of the jurisdiction of the Ausable Bayfield Conservation Authority the Ausable Bayfield SPA is shown on Map 2. All of the watersheds within the Ausable Bayfield SPA flow into Lake Huron.

The municipal drinking water supplies in the Ausable Bayfield SPA are predominantly from the Lake Huron intake, owned and managed by a multi-municipal board, the City of London being the largest user. Groundwater sources currently supply Exeter, Hensall, Zurich, Brucefield and parts of Bayfield. The communities of Exeter and Hensall plan to join the Lake Huron pipeline system in the next five years, written confirmation is pending.

**Table 1. Municipalities and Residential Drinking Water Systems in the Ausable Bayfield Source Protection Area**

<b>Municipality</b>	<b>Tier</b>	<b>Water Source</b>	<b># of Wells</b>	<b>Location of Intake or Well</b>	<b>Communities Served</b>
<i>County of Lambton</i>	<i>Upper</i>	<i>Does not operate municipal systems.</i>			
Lambton Shores	Lower	Lake Huron Primary Water Supply System		Pt Blake	Entire municipality
Warwick	Lower	No municipal system in SPR		n/a	n/a
<i>County of Middlesex</i>	<i>Upper</i>	<i>Does not operate municipal systems</i>			
Adelaide Metcalfe	Lower	No municipal system in SPR		n/a	n/a
Lucan Biddulph	Lower	Lake Huron Primary Water Supply System No other municipal systems in SPR		Pt Blake	Lucan
Middlesex Centre	Lower	Lake Huron Primary Water Supply System No other municipal systems in SPR		Pt Blake	Denfield
North Middlesex	Lower	Lake Huron Primary Water Supply System No other municipal systems in SPR		Pt Blake	Entire municipality

Municipality	Tier	Source Water	# of Wells	Location of Intake or Well	Communities Served
<i>Huron County</i>	<i>Upper</i>	<i>Does not operate municipal systems.</i>			
Bluewater	Lower	Lake Huron Primary Water Supply System Groundwater  Note: Hensall system (2 wells) to be decommissioned within 5 yrs.	4	Pt Blake Carriage Lane Harbour Lights Zurich	Shoreline Bayfield area Bayfield area Zurich
Central Huron	Lower	Groundwater	6	Vandewetering S.A.M Dundass Clinton	Lakeshore Lakeshore Lakeshore Clinton
Huron East	Lower	Groundwater	1	Brucefield	Brucefield
South Huron	Lower	Lake Huron Primary Water Supply System  Note: Exeter system (5 wells) to be decommissioned within 5 yrs.		Pt Blake	Stephen ward Exeter ward
<i>Perth County</i>	<i>Upper</i>	<i>Does not operate municipal systems</i>			
Perth South	Lower	No municipal system in SPR		n/a	n/a
West Perth	Lower	No municipal system in SPR		n/a	n/a

As indicated in Table 1, there are 12 lower tier municipalities and the Counties of Lambton, Middlesex, Huron and Perth that are in part or in whole included in the Ausable Bayfield SPA. In addition to these municipal sources, there are a number of non-municipal systems scattered throughout the Ausable Bayfield SPA. At present, there has been no request to elevate (include) these drinking water sources within the Terms of Reference. There has been an indication that Kettle Point First Nation would like to pursue the possibility of inclusion within this study. There are jurisdictional and funding complexities that will attend this process if it should move forward.

### 3.2 The Maitland Valley Source Protection Area

The Maitland Valley SPA contains watersheds that flow into Lake Huron (Map 3). The Maitland Valley SPA comprises the jurisdiction of the Maitland Valley Conservation Authority. As indicated in Table 2, the Maitland Valley SPA contains mostly the use of groundwater sources for drinking water, with the exception of the Town of Goderich which sources water from an intake in Lake Huron.

**Table 2. Municipalities and Residential Drinking Water Systems in the Maitland Valley Source Protection Area**

<b>Municipality</b>	<b>Tier</b>	<b>Water Source</b>	<b># of Wells</b>	<b>Location of Intake or Well</b>	<b>Communities Served</b>
<i>County of Bruce</i>	<i>Upper</i>	<i>Does not operate municipal systems.</i>			
Huron-Kinloss	Lower	Groundwater	3	Lucknow Whitechurch	Lucknow Whitechurch
South Bruce	Lower	No municipal system in SPR		n/a	n/a
<i>County of Huron</i>	<i>Upper</i>	<i>Does not operate municipal systems.</i>			
Town of Goderich	Lower	Surface Water		Goderich	Goderich & Area
Ashfield-Colborne-Wawanosh	Lower	Groundwater	6	Huron Sands Dungannon Benmiller Estates Century Heights	Lakeshore Dungannon Benmiller Lakeshore
Central Huron		Groundwater	3	Auburn McClinchey Kelly	Auburn Lakeshore Lakeshore

Howick		No municipal system in SPR			
Huron East		Groundwater	3	Brussels Seaforth – Welsh St.	Brussels Seaforth
Morris-Turnberry		Groundwater	1	Belgrave	Belgrave
North Huron		Groundwater	4	Blyth Wingham	Blyth Wingham
<i>County of Perth</i>	<i>Upper</i>	<i>Does not operate municipal systems.</i>			
Perth East		No municipal system in SPR		n/a	n/a
North Perth		Groundwater	7	Listowel Gowanstown Atwood Molesworth	Listowel Gowanstown Atwood Molesworth
West Perth		No municipal system in SPR		n/a	n/a
<i>County of Wellington</i>	<i>Upper</i>	<i>Does not operate municipal systems.</i>			
Mapleton		No municipal system in SPR		n/a	n/a
Minto		Groundwater	6	Harriston Palmerston	Harriston Palmerston
Wellington North		No municipal system in SPR		n/a	n/a

As indicated in Table 2, there are 14 lower tier municipalities and the Counties of Bruce, Huron, Perth and Wellington that are in part or in whole included in the Maitland Valley SPA. In addition to these municipal sources, there are a number of non-municipal systems scattered throughout the Maitland Valley SPA. At present, there has been no request to elevate (include) these drinking water sources within the Terms of Reference.

#### **4.0 Scope of Work**

The work required under the *Clean Water Act* consists of two main products: Assessment Reports and Source Protection Plans. For the ABMV SPR, two assessment reports and two source protection plans will be created, one for each of the source protection areas shown on Map 2 and Map 3. The details regarding the scope of work will be found in Regulations and Director's Rules. These documents may be released from the Province over the course of the next two years. Therefore, this ToR will address the current guidance and regulation, however, it is expected that amendments will be required as more direction is received from the Province.

The drinking water systems that can be included in the source protection planning process include:

- Municipal residential drinking water systems;
- Other drinking water systems (e.g. non-residential municipal systems, residential systems, clusters); and
- First Nations drinking water systems.

Details on the tasks, status and costs of current technical work are found in Appendix A for the Assessment Report(s) and Appendix B for the Source Protection Plans. It is important to note that the Ontario Ministry of the Environment is expected to provide guidance on other i.e. non-municipal drinking water systems in 2008. Likewise, the Assessment Report regulations and Director's rules are expected to be complete in summer 2008.

In addition to the scope of work anticipated by the Act and Regulations, there are numerous support activities which must be addressed. For example, to undertake these technical requirements within the scope of work will require project management activities, communications strategy and delivery, data and information technology and GIS skills, technical expertise and scientific research, collaboration between all parties and financial resources. The following portion of this section addresses these activities.

#### **4.1 Project Management & Staffing**

Oversight for this project has been assigned to a project manager. The Province has used this position as a "point person" to facilitate communications, product delivery and accountability for the success of the project. This position includes management of human resources, contracts, acquisitions in keeping with policy, work planning and financial management. This function will continue throughout the balance of the project. In addition, technical expertise will be procured from both internal sources (staff assigned to

source protection planning through the SPAs) and external sources (consultants). Finally, administrative support and technical writing skills are required in house to provide the support to the SPC and working groups and to knit together, in a meaningful way, the various reports and documents received in support of the Assessment Report(s) and Source Protection Plans.

Staff positions dedicated to the source protection program includes a regional project manager, consulting hydrogeologist, water resources engineer, communication specialists, project assistant, GIS specialists, and database specialist. Additional short term resources will be requested as the need arises.

## **4.2 Communications and Data Management:**

Communications in the ABMV Region has been based on community engagement through open dialogue. To this end an interactive website has been developed where documents, information, meeting schedules and news are all posted for public consumption ( [www.sourcewaterinfo.on.ca](http://www.sourcewaterinfo.on.ca) ). In addition, numerous brochures, presentations and other materials have been produced and are disbursed in as comprehensive fashion as is affordable. This team is also working toward clarifying expectations and the limitations of the *Clean Water Act* as well as gathering a deeper understanding of stakeholder concerns so that they can be reflected in the local planning process. To facilitate these contributions, working groups have been established and are undertaking a comprehensive training program on drinking water source protection.

Data and information management and the GIS function are required not only to provide information for those who prefer diagrams or maps as communications tools, but the products for the Province of Ontario are required in a prescribed digital format. Mapping tools will continue to be refined as the gaps in the science are filled and new requirements from the province are received.

In order to ensure accurate delineation of drinking water source protection areas, a comprehensive approach to information management must be undertaken. The maps and policies produced through source protection planning must be defensible and reproducible. With the amount of data that are required to produce the legislated requirements, it is important that neighbouring SPCs discuss information management approaches and aim to achieve similar standards. As noted above, for municipalities that lie in more than one SPR, a consistent approach to data management will be expected.

It is essential to make sure the Source Protection Authorities, municipal partners and other stakeholders, groups or organizations are also kept informed and have an opportunity to provide feedback, make corrections and positive contributions.

## **4.3 Roles & Responsibilities**

The ABMV SPR organizational framework is shown in Figure 3. This network of partners is a combination of existing partnerships that have been working successfully on watershed management for decades and new partnerships that have been initiated to achieve the requirements of the *Clean Water Act*.

### ***Source Protection Committee***

The SPC is responsible to guide the development of the Assessment Report(s) and the Source Protection Plans. The SPC will work in cooperation with the drinking water source protection authorities to establish work plans and set goals and priorities for drinking water source protection. The SPC will use geographically-based, local community working groups to consider technical studies, ensure input from local municipalities and provide advice on source protection plan requirements.

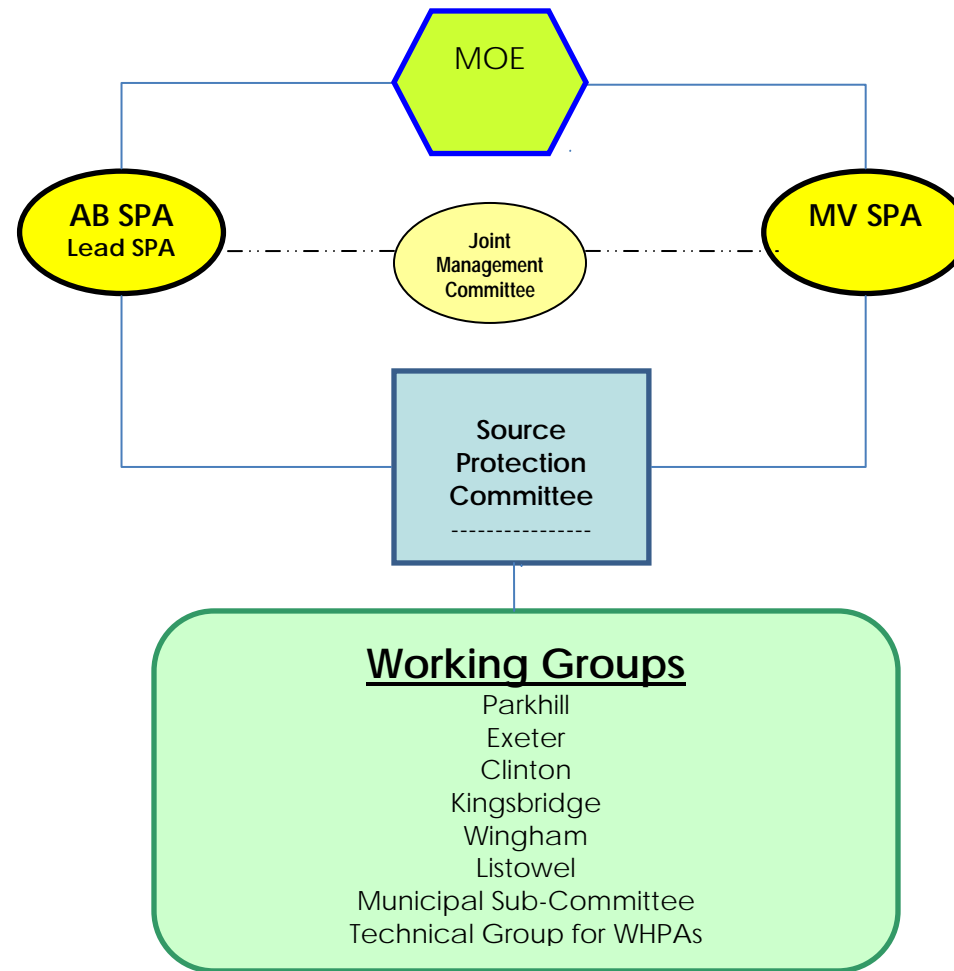
### ***Source Protection Authorities and Joint Management Committee***

The Ausable Bayfield and Maitland Valley Source Protection Authorities are responsible for managing the funding for drinking water source protection and to provide input on the SPC products like the Assessment Report(s) and Source Protection Plans. The Source Protection Authorities consist of the existing Board of Directors for the Conservation Authorities which are comprised of elected and appointed members of local municipalities. The two Source Protection Authorities have agreed to use a Joint Management Committee as a partnership mechanism to manage the key decision points of the source protection program.

### ***Working Groups***

Working groups were established at the beginning of 2008 to promote a better understanding of the science behind the reports and plans as well as to comment on draft reports and deliverables and feedback for the SPC to incorporate into the final report. Six geographically based working groups have been created. They include: Parkhill, Exeter, Clinton, Kingsbridge, Wingham and Listowel. As well, there is a municipal sub-committee comprised of council members from across the SPR and a technical working group addressing the Well Head Protection Area studies. Most municipalities with residential drinking water systems have joined one or more working groups. As well, representatives from other stakeholder groups participate in the Working Groups.

Figure 3. Source Protection Region Organizational Framework



## 4.4 Assessment Report(s)

In its simplest form, the Assessment Report(s) will be a summary of the general watershed characteristics, a summary of the municipal technical studies showing the location of vulnerable areas as well as a list of the water quality and quantity risks around municipal drinking water systems. Watershed characteristics have been studied under the watershed characterization process and water budget activities across the entire SPR. As for specific drinking water systems, all of the large municipal drinking water systems in the ABMV SPR are currently being studied.

Table 1 and Table 2 outline the municipalities or portion of municipalities that lie within each of the SPAs and the municipal residential drinking water systems that currently exist. All of the municipal systems listed in these tables are currently being studied and are included in the cost estimates in Appendix A. Appendix C also lists these municipal systems costs estimates in the prescribed format provided by the Ministry of the Environment.

Table 3 outlines the tasks required for the assessment report(s) including a description of the task, the lead for the task, cost estimate and timeline. Due to the strong relationship between the conservation authorities and local municipalities, all of the groundwater studies underway to date have been led by the ABMV staff. Municipal Council resolutions were provided to confirm this lead role. In the cases of the surface water intakes at Goderich and Pt Blake, the municipalities have chosen to lead these technical studies with the ABMV staff as part of the steering committees. Where a task has not been initiated, the lead has been confirmed through the development of the ToR.

Once the ToR has been approved by the MOE, the SPC has one year to complete the Assessment Report(s).

## 4.4 Source Protection Plans

A Source Protection Plan is a legislated requirement in the *Clean Water Act* that the SPC must develop for each SPA within the SPR. Although the CWA provides a general framework for the source protection plans, the specific details regarding content and methods will only be available once the Province develops and enacts a regulation. The anticipated date for a final regulation on the source protection plans is 2009.

The development of the source protection plans for the Ausable Bayfield and Maitland Valley SPAs will be guided by the same resources identified in the assessment report(s) scope of work. It is anticipated that the roles may shift slightly for some of the stakeholders involved. For instance, municipal planning staff may wish to become involved and steer or undertake work to provide the SPC with sample policies which reflect both strong planning principles and the input from the working groups.

Appendix B highlights the principal tasks required for the creation of source protection plans while Appendix C lists the tasks in the requisite format. Through the review of the ToR, feedback will be requested from local municipalities on the roles and implementation of these tasks. Due to the absence of the source protection plan regulation, cost

estimates and timelines has been estimated. Only general timelines can be set at this point in the process. The overall timelines are reflected in the multi-year schedule which provides a schematic of the start date and completion date for the major source protection tasks.

## **5.0 List of Matters that Affect Other Source Protection Committees**

The ABMV SPR is bounded by three other SPRs. Naturally, there are several issues which need to be discussed with each of the neighbouring SPCs. The list of matters is as follows:

### **5.1 Regional Groundwater Flow and Vulnerability Mapping**

A significant and challenging aspect of the source protection program is developing detailed computer models of how groundwater flows in the SPR. Several versions of vulnerability mapping exist from previous studies, some of which were specific to municipal boundaries. The regional groundwater vulnerability deliverable for drinking water source protection will involve the review of previous work and a more accurate and up-to-date map of highly vulnerable aquifers and significant groundwater recharge areas. As this technical exercise is conducted, it is essential that the mapping is compared and relatively compatible with the mapping in neighbouring SPRs. In some cases, the deep groundwater system in the ABMV SPR is recharged from outside the region. Therefore, understanding the techniques and outputs from neighbouring SPRs will help create a better representation of the groundwater system in our region.

### **5.2 Shared Municipalities**

An important issue for discussion with neighbouring SPCs relates to the municipalities that lie in one or more source protection regions. Although each SPR will have distinct geographic features that will have an impact on the drinking water systems, municipalities have indicated from the beginning of the technical work that a coordinated approach to the development of WHPAs and IPZs should be undertaken. In addition, once the plan development phase begins, shared municipalities anticipate reasonably consistent policies for drinking water source protection.

### **5.3 Great Lakes Agreements**

If a source protection area contains water that flows into the Great Lakes, the terms of reference for the preparation of an assessment report(s) and source protection plan for the source protection area shall be deemed to require consideration of the following documents: the Great Lakes Water Quality Agreement, 1978, the Great Lakes Charter, 1978, and the Canada-Ontario Agreement, 2002. Since the ABMV SPR drains into the Great Lakes system, it is advisable to discuss the implications of this requirement and the level of detail that is required to achieve the intent of the legislation. The Minister may create Great Lakes Targets for an SPR. This will require further examination as information on the nature of these targets is provided.

Assessment Report Tasks	Description	Methodology	Lead	Confirmed	Cost Estimate over 8 Years	Timeline	% Complete
<b>Source Protection Planning Committee Project Management and Coordination</b>	Undertaking administrative support, staffing, management support, and training necessary to provide project coordination for the assessment report components and direct support to the source protection committee.	The Source Protection Committee through the Source Protection Authorities has hired core staff to undertake this role.	ABMV	Y	3.2 Million	On-going	n/a
<b>Communications</b>	Local area engagement, outreach and creation of communications products that support the assessment report process.	Through the SPC, staff are producing materials to meet legislative obligations and provide education and outreach to the public and key stakeholders.	ABMV	Y	Included Above	On-going	n/a
<b>Information management</b>	Conducting overall data management, data sharing agreements, standards, mapping, software and maintenance.	Through the SPC, staff are maintaining the hardware and software to meet legislative obligations for both information sharing and protection of privacy.	ABMV	Y	Included Above	On-going	n/a
<b>Watershed characterization</b>	Identifying and describing watersheds in the source protection area. May include water quality analysis and peer review for water quality analysis. Details on how to complete this task will be available in the Assessment Report regulation, Director's rules, and guidance when they are developed.	This work was completed over the past three years and has been received by the SPC	ABMV	Y		Oct-06 Mar-08	100
<b>Water Budget</b>							
	Describing the overall flow system dynamics for each watershed in the source protection area taking into consideration surface water and groundwater features, land cover (e.g. proportion of urban vs. rural uses), human-made structures (e.g. dams, channel diversions, water crossings), and water takings.			Y		Done	100%
	Details on how to complete this task will be available in the Assessment Report regulation, Director's rules, and guidance when they are developed.	This work has been completed over the past three years and will be received by the SPC by May 2008	ABMV		\$ 290,000		
Tier 1 water budget analysis and stress assessment	Conducting a tier 1 water budget analysis, stress assessment, and delineation of significant groundwater recharge areas. May also include the identification of water quantity concerns and an analysis of uncertainty. Details on how to complete this task will be available in the Assessment Report regulation, Director's rules, and guidance when they are developed.			Y		Mar-06 Apr-08	95%
Tier 2 water budget analysis and stress assessment	If determined necessary from a tier 1 water budget analysis and stress assessment, conducting a tier 2 water budget analysis and stress assessment, and refining the delineation of significant groundwater recharge areas. May also include the identification of water quantity concerns and an analysis of uncertainty. Details on how to complete this task will be available in the Assessment Report regulation, Director's rules, and guidance when they are developed.			Y		May-08 Mar-09	n/a
Tier 3 water budget analysis and water quantity risk assessment	If determined necessary from a tier 2 water budget analysis and stress assessment, conducting a tier 3 water budget analysis and water quantity risk assessment. May include identifying significant, moderate and low water quantity threats. May also include consultation with property owners/residents/stakeholders impacted by a significant drinking water threat scoring and an analysis of uncertainty. Details on how to complete this task will be available in the Assessment Report regulation, Director's rules, and guidance when they are developed.	Minimal Tier 2 work will be required in two sub watersheds within the SP Region	ABMV		\$ 70,000		
				N		tbd tbd	n/a
<b>Regional Groundwater Vulnerability</b>							
Delineate Highly Vulnerable Aquifers (HVA)	Delineating the location and extent of highly vulnerable aquifers in the source protection area and applying vulnerability scores. An uncertainty analysis may be included in this task. Details on how to complete this task will be available in the Assessment Report regulation, Director's rules, and guidance when they are developed.	Prior to the passing of the Terms of Reference, the project Hydrogeologist will work with the GIS staff to refine the delineation of the HVA in keeping with the directors rules (expected shortly). Threats would be identified by class of activity or land use. The assessment of these threats (scoring risk) may have to be outsourced depending on the size of the area delineated, the expectations within the Director's Rules and the direction of the SPC. It is proposed that in December 2008 the number of parcels impacted be reviewed and threats/risk work be outsourced if need be.	ABMV	Y		Apr-09 Aug-09	0
Identifying issues, inventorying threats and assessing hazards in HVAs	Listing and describing drinking water quality issues, inventorying threats and assessing hazards (including uncertainty analysis) in the highly vulnerable aquifers. Details on how to complete this task will be available in the Assessment Report regulation, Director's rules, and guidance when they are developed.		ABMV	Y		Sep-08 Nov-09	0
Assessing risks in HVAs	Identifying any significant, moderate, low, and negligible drinking water threats, undertaking an issues evaluation, and analysing uncertainty in highly vulnerable aquifers. Details on how to complete this task will be available in the Assessment Report regulation, Director's rules, and guidance when they are developed.	Additional ongoing studies include: Sinkhole investigations Seaforth Radionuclide Well investigations Base flow and water quality data collection Climate trends implications	ABMV	Y	\$65000 HVA work \$135,000 Other work	Sep-08 Nov-09	0
Identifying issues, inventorying threats and assessing hazards in SGRAs	Listing and describing drinking water quality issues, inventorying threats and assessing hazards (including uncertainty analysis) in the significant groundwater aquifers. Details on how to complete this task will be available in the Assessment Report regulation, Director's rules, and guidance when they are developed.		ABMV	Y		Sep-08 Nov-09	0
Assessing risk in SGRAs	Identifying any significant, moderate, low, and negligible drinking water threats, undertaking an issues evaluation, and analysing uncertainty in significant groundwater recharge areas. Details on how to complete this task will be available in the Assessment Report regulation, Director's rules, and guidance when they are developed.		ABMV	Y		Sep-08 Aug-11	0

Assessment Report Tasks	Description	Methodology	Lead	Confirmed	Cost Estimate over 8 Years	Timeline	% Complete
<b>Municipal Residential Drinking Water Systems on Groundwater</b>							
Delineate Wellhead Protection Areas (WHPA)	Delineating the location and extent of the vulnerable area around a drinking water system in the source protection area and applying a vulnerability score. Uncertainty analysis and peer review may be required. In addition, consultation with property owners/residents/stakeholders affected by the delineation and scoring for these vulnerable areas may be required. Details on how to complete this task will be available in the Assessment Report regulation, Director's rules, and guidance when they are developed.	These tasks (to the Tier 1 Risk Assessment level) have been outsourced to a consortium of consultants. A steering committee comprised of staff from the nine municipalities has been in place since the start of the project in 2006. While the delineation tasks have been completed for some time, it is anticipated that this work will conclude by fall 2009. The timeframe is dependant on the release of a database tool under construction at the Ontario Ministry of the Environment.	ABMV	Y		Apr-06 Aug-09	100
Identifying issues, inventorying threats and assessing hazards in WHPAs	Listing and describing drinking water quality issues, inventorying threats and assessing hazards (including uncertainty analysis) in wellhead protection areas. Details on how to complete this task will be available in the Assessment Report regulation, Director's rules, and guidance when they are developed.	A Tier 2 Risk Assessment is proposed for 2010. This would be a parcel by parcel implementation of the database tool on those properties where a significant risk score is likely. Each property would be visited to verify data and include factors which mitigate or manage the possible risk. The suggested approach would be a joint visit from Conservation Authority staff knowledgeable about stewardship and the Municipal Risk Management Official. This would assist a land owner in addressing Risk Management Planning and the municipality by providing current information.	ABMV	Y	\$ 611,000 9 Municipalities \$ 46,500 Huron East Future refinements and Tier 2 Risk Assessment \$438,000	Jul-06 Aug-09	100
Assess risk in WHPAs	Identifying any significant, moderate, low, and negligible drinking water threats, undertaking an issues evaluation, and analysing uncertainty in wellhead protection areas. Consultation may be required with stakeholders impacted by significant drinking water threats scoring. Details on how to complete this task will be available in the Assessment Report regulation, Director's rules, and guidance when they are developed.		ABMV	Y		Jul-06 Aug-10	0
Significant Recharge Area	Delineating the location and extent of the significant recharge area in the source protection area and applying a vulnerability score.	This work will have started in 2008 and continue on. The project Hydrogeologist will direct this work. Once the delineation has been completed, additional tasks relating to scoring may be outsourced.	ABMV	Y	Included in \$438,000	Jun-08 Dec-09	0
Consultation on the overall proposed assessment report	Meeting the legislative and regulatory requirements on the consultation and submission process of the proposed assessment report. Details on how to complete this task will be available in the Assessment Report regulation, Director's rules, and guidance when they are developed.	It is proposed that the core staff will coordinate this on behalf of all parties and generate the educational and notice materials.	ABMV	Y	Included in \$438,000	Jul-06 Sep-09	0
Development of Assessment Report		It is proposed that the core project staff will be required to integrate the ground water and surface water reports to develop the Assessment Report for the SPC to consider.	ABMV	Y	Included in \$438,000	Sep-08 Dec-09	0
<b>Municipal Residential Drinking Water Systems on Surface Water</b>							
Delineate Intake Protection Zones (IPZ)	Delineating the location and extent of the vulnerable area around a drinking water system in the source protection area and applying a vulnerability score. Uncertainty analysis and peer review may be required. In addition, consultation with property owners/residents/stakeholders affected by the delineation and scoring for these vulnerable areas may be required. Details on how to complete this task will be available in the Assessment Report regulation, Director's rules, and guidance when they are developed.	These tasks (to the Tier 1 Risk Assessment level) have been outsourced to a consortium of consultants. One group for Goderich and another for the Pt Blake Intakes. A steering committee comprised of staff from the lead municipality and core SP staff has been in place since the start of the project in 2006. While the delineation tasks have been completed for some time, it is anticipated that this work will conclude by fall 2009. The timeframe is dependant on the release of a database tool under construction at the Ministry of the Environment.	Goderich London (Lake Huron Supply)	Y		Jul-06 Apr-08	80
Identifying issues, inventorying threats and assessing hazards in IPZs	Listing and describing drinking water quality issues, inventorying threats and assessing hazards (including uncertainty analysis) in intake protection zones. Details on how to complete this task will be available in the Assessment Report regulation, Director's rules, and guidance when they are developed.		Goderich London (Lake Huron Supply)	Y	\$ 161,500 Lake Huron Supply \$ 69,000 Goderich	Jul-06 Oct-08	10
Assess risk in IPZs	Identifying any significant, moderate, low, and negligible drinking water threats, undertaking an issues evaluation, and analysing uncertainty in intake protection zones. Consultation may be required with stakeholders impacted by significant drinking water threats scoring. Consultation with adjacent source protection areas or regions may also be required for shared Great Lakes drinking water issues. Details on how to complete this task will be available in the Assessment Report regulation, Director's rules, and guidance when they are developed.	A Tier 2 Risk Assessment is proposed for 2010. This would be a parcel by parcel implementation of the database tool on those properties where a significant risk score is likely. Each property would be visited to verify data and include factors which mitigate or manage the possible risk. The suggested approach would be a joint visit from Conservation Authority staff knowledgeable about stewardship and the Municipal Risk Management Official. This would assist a land owner in addressing Risk Management Planning and the municipality by providing current information.	Goderich London (Lake Huron Supply)	Y	\$400,000 Additional Threats & Risk Studies	Jul-06 Oct-08	0
Consultation on the overall proposed assessment report	Meeting the legislative and regulatory requirements on the consultation and submission process of the proposed assessment report. Details on how to complete this task will be available in the Assessment Report regulation, Director's rules, and guidance when they are developed.		Goderich London (Lake Huron Supply)	Y		Jul-06 Jul-09	0

Assessment Report Tasks	Description	Methodology	Lead	Confirmed	Cost Estimate over 8 Years	Timeline	% Complete
<b>First Nation Drinking Water Systems</b>							
Delineating and applying vulnerability scores to WHPAs or IPZs	<p>Coordinate discussions with First Nations Bands to determine the need to delineate the location and extent of the vulnerable area around a drinking water system (wellhead protection areas for drinking water systems using groundwater or intake protection zones for drinking water systems withdrawing from surface water) in the source protection area and applying a vulnerability score.</p> <p>Uncertainty analysis and peer review may be required.</p> <p>Details on how to complete this task will be available in the Assessment Report regulation, Director's rules, and guidance when they are developed.</p> <p>A Band Council resolution is required prior to undertaking the work.</p>	Kettle and Stony Point Band Council resolution requested elevation of two system and was delivered to the MOE. Awaiting reply from Province of Ontario regarding the inter-jurisdictional issues. Propose a "pre-screen" of the two IPZ systems in 2008 using existing staff. If necessary, further modeling to be outsourced.	tbd	N	Pre Screen \$20,000 \$10,000 per IPZ  \$150,000 Additional work if necessary	Apr-09 tbd	0
Identifying issues, inventorying threats and assessing hazards in WHPAs or IPZs	<p>Coordinate discussions with First Nations Bands to determine the need to list and describe drinking water quality issues, inventorying threats and assessing hazards (including uncertainty analysis) in wellhead protection areas and/or intake protection zones.</p> <p>Details on how to complete this task will be available in the Assessment Report regulation, Director's rules, and guidance when they are developed.</p>		tbd	N	see above	tbd tbd	0
Assess risk in WHPAs or IPZs	<p>Coordinate discussions with First Nations Bands to determine the need to identify any significant, moderate, low, and negligible drinking water threats, undertaking an issues evaluation, and analysing uncertainty in wellhead protection areas or intake protection zones.</p> <p>Discussions with adjacent source protection areas or regions may also be required for shared Great Lakes drinking water issues.</p> <p>Details on how to complete this task will be available in the Assessment Report regulation, Director's rules, and guidance when they are developed.</p>		To Be Determined	tbd	N	see above	tbd Mar-10
<b>Non-Municipal Drinking Water Systems</b>							
	<p>Under the <i>Clean Water Act</i> municipal councils may include non-municipal drinking water systems in the source protection plans by resolution.</p> <p>In the Raisin-South Nation SPR there are extensive non-municipal systems that could potentially be included.</p> <p>To date, local municipalities have been requested to identify any systems that they may be considering to include.</p> <p>The Ministry of the Environment is currently preparing a guidance document on the implications for including these systems (e.g., cost, liability etc.).</p> <p>It is anticipated that most municipalities will wait until the provincial guidance is available before making a decision.</p> <p>The terms of reference can be amended to include these systems at a later date.</p>	<p>Propose a pilot study to apply a screening tool developed by MNR on a small sample (3 or 4) hamlets reliant on individual wells and septic systems. The results of this study would indicate the extent of issues and implications to source protection plan policies which could be extrapolated to other hamlets. A list of hamlets will be provided to each municipality.</p> <p>Municipalities may choose to "elevate" a system into the project. The SPC would look to the municipality for suggestions about lead roles etc.</p>	ABMV	Y	\$75,000	Apr-09 Mar-10	0
<b>Exempted Systems</b>							
	<p>Any municipal residential drinking water systems that may be partially or wholly taken off-line within the next 5 years are not to be included in the source protection plan. Municipalities have been requested to identify any of these systems and to forward the council resolution to the SPR staff.</p> <p>For example, the wells in Exeter area are to be decommissioned in the next five years so they will not be studied</p>	Receive notice from municipalities by April 25th 2008	Municipalities	Y	n/a	n/a n/a	0

Appendix B Scope of Work: Source Protection Plans

Source Protection Plan Tasks	Description	Methodology	Lead	Cost Estimate	Confirmed	Timeline				
Source Protection Committee Project Management and Coordination	Undertaking administrative support, staffing, management support, and training necessary to provide project coordination for the source protection plan components and direct support to the source protection committee.	Core staff of the project are equipped to undertake these tasks and would do so as part of the overall project management	ABMV	See AR Sheet	Y	On-going				
Communications	Local area engagement, outreach and creation of communications products that support the source protection plan process.									
Information Management	Conducting overall data management, data sharing agreements, standards, mapping, software and maintenance.									
Establish evaluation criteria for selecting policies	Establishing evaluation criteria to assist with objectively deciding how policies will be considered in a transparent manner. Criteria may consider elements such as the natural, social, and economic environments, including health, cost-benefit considerations, and conformance with existing official plans.									
Administrative priority setting of work required to complete SPP based on risk assessments in AR	Administrative priority setting and strategic planning for the management of the work required to complete the source protection plan based on results of risk assessments documented in the assessment report.  It is anticipated that the number of significant threats, the distribution and location of the threats, etc., may guide the committee in how they will specifically create the plan (e.g. which threats in which vulnerable area will be addressed first), who will be the key players in the plan development, and how they wish to prioritize the work required.  Detailed requirements and guidance will be provided in the Source Protection Plan regulation and guidance document when they are developed.		SPC	See AR Sheet	Y	Mar 2009 - Fall 2011				
<b>Source Protection Plan</b>										
Policy development to address drinking water threats (where required and/or permissible in Act/Regs)	Policy development to address drinking water threats (where required and/or permissible in the Act and source protection plan regulation). Detailed requirements and guidance will be provided in the Source Protection Plan regulation and guidance document when they are developed.	It is proposed that the Planning Departments of the Upper Tier Municipalities, or Lower Tiers where applicable, create a steering committee to devise an RFP and manage a consulting project to review Source Protection Policies from around the area, country and globe. These policies would then be evaluated against local need (based on vulnerable areas, classes of land uses and activities). Draft policies for all those areas stipulated in the Clean Water Act would then be brought to the Source Protection Committee for their consideration.	SPC	\$ 250,000	Y	Apr-09 Aug-12				
Policy development to address funding requirements for implementation of source protection plans.	Funding mechanisms for implementing land use policies on private land will be identified and included in the source protection plans. Financial implications, including compensation, financial assistance and incentives, for land use restrictions will be researched by the SPC.									
Policy development for monitoring (where required, advisable and/or permissible in Act & Regs)	Policy development for monitoring activities (where required, advisable and/or permissible in the Act and source protection plan regulation), including determining who is responsible for implementing these policies. Detailed requirements and guidance will be provided in the Source Protection Plan regulation and guidance document when they are developed.									
Policy development for Great Lakes elements (where required/permissible in Act & Regs)	Policy development for Great Lakes associated elements (where directed by the Minister and required or permissible in the Act and source protection plan regulation), including monitoring policies to assist in implementing and determining the effectiveness of achieving Great Lake target(s) policies, determining who is responsible for implementing those policies, and determining the need to identify any of these policies as "designated Great Lakes policies." Detailed requirements and guidance will be provided in the Source Protection Plan regulation and guidance document when they are developed.									
Establishing timelines for policy implementation	Establishing timelines for policy implementation after all policies for the SPP are developed, giving consideration to the policies developed, key players affected, capacity for implementation, the assessed risks, and natural, social, and economic considerations, including local community interests/needs. Detailed requirements and guidance will be provided in the Source Protection Plan regulation and guidance document when they are developed.									
Consultation on the overall proposed source protection plan	Consultation and submission process of the overall proposed source protection plans. Details on how to conduct the consultations on the overall proposed source protection plans will be provided in the Source Protection Plan regulation and guidance document when they are developed.									
Other Source Protection Plan Preparation Tasks	Additional tasks are to be discussed with the Source Protection Committee.						SPC	\$50,000	Y	Feb-08 Jun-10

# Terms of Reference for Ausable Bayfield Source Protection Area

Ausable Bayfield Maitland Valley Source Protection Committee

2008-Jul-30

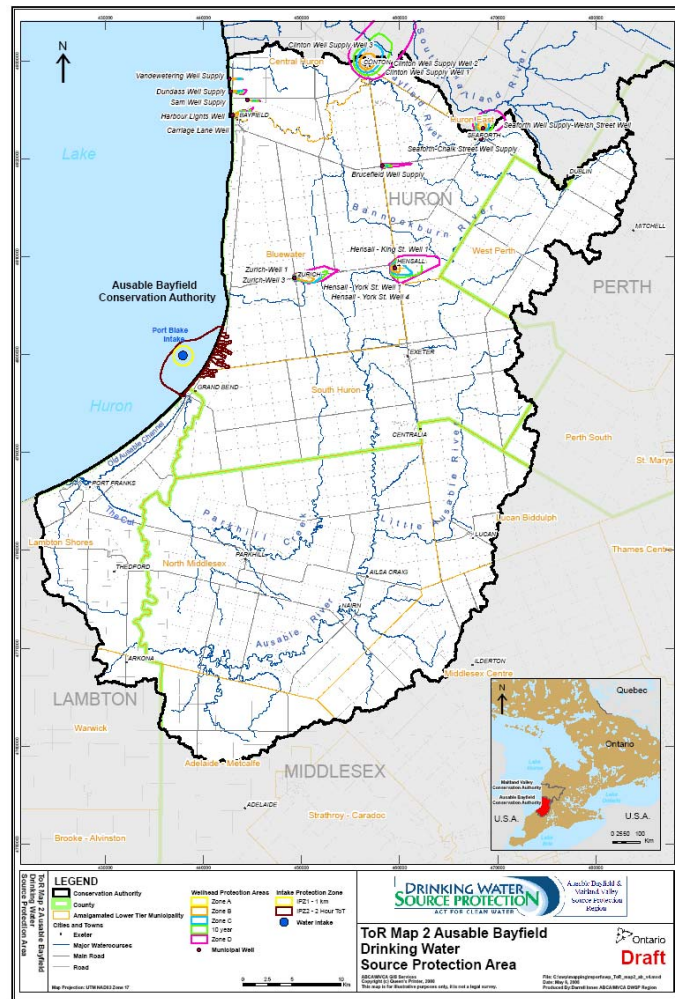
# Table of Contents

Map of Source Protection Area .....	4
Map of Source Protection Region .....	6
List of Municipalities Located in the Ausable Bayfield Source Protection Area .....	7
List of Municipal Residential Drinking Water System(s) .....	8
List of Drinking Water System(s) Included by Municipal Council Resolution .....	9
(Not Municipal Residential Drinking Water Systems) .....	9
List of Drinking Water Systems Serving Reserve(s) .....	9
(Not Municipal Residential Drinking Water Systems) .....	9
List of Fully or Partially Exempted Municipal Residential Drinking Water System(s) .....	9
List of Drinking Water System(s) Included by Minister of the Environment .....	10
(Not Municipal Residential Drinking Water Systems) .....	10
List of Matter(s) that Affect Other Source Protection Committees .....	11
The Work Plan to Complete the Assessment Report .....	12
The Work Plan to Complete the Source Protection Plan .....	14
The Date the Source Protection Plan is to be Submitted to the Minister for Approval by the Ausable Bayfield Conservation Authority: .....	14
Council Resolution(s) to Include Drinking Water System(s) .....	15
Council Resolution(s) to Exempt Municipal Residential Drinking Water System(s) .....	15
Resolution .....	15
Municipality of South Huron #269-2008 .....	16
Resolution .....	16
Detailed Information on Municipal Residential Drinking Water System(s) .....	17
Detailed Information on Drinking Water System(s) Included by Municipal Council Resolution .....	20
(Not Municipal Residential Drinking Water Systems) .....	20
Detailed Information on Drinking Water System(s) Included by Bands Serving Reserve(s) .....	20
(Not Municipal Residential Drinking Water Systems) .....	20
Detailed Information on Fully or Partially Exempted Municipal Residential Drinking Water System(s) .....	21
Detailed Information on Drinking Water System(s) Included by the Minister of the Environment .....	22
(Not Municipal Residential Drinking Water Systems) .....	22
Detailed Work Plan to Complete the Assessment Report .....	23
Detailed Work Plan to Complete the Source Protection Plan .....	25
Summary of Financial Statistics .....	26
Estimated Costs for Tasks by Fiscal Year .....	27
Process Checklist .....	29

Terms of Reference

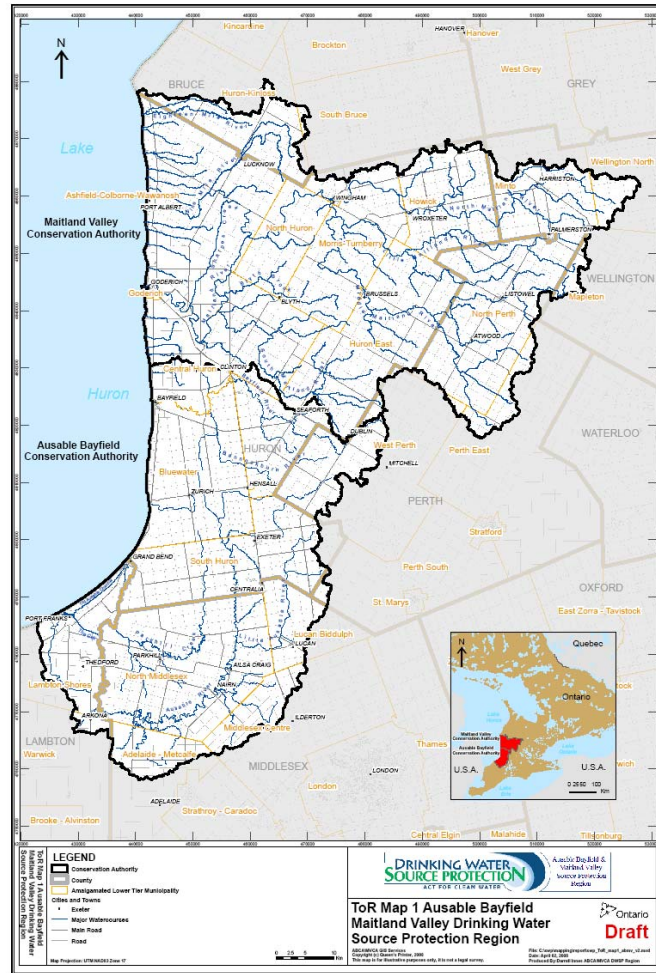
Appendix: Full Task Descriptions..... 31

# Map of Source Protection Area





# Map of Source Protection Region



## List of Municipalities Located in the Ausable Bayfield Source Protection Area

<b>Legal Name of Municipality</b>
Huron, County of
Perth, The Corporation of the County of
Middlesex, County of
Lambton, The Corporation of the County of
Lambton Shores, The Municipality of
Warwick, Township of
Adelaide Metcalfe, Township of
Lucan Biddulph, Township of
Middlesex Centre, Municipality of
North Middlesex, Municipality of
Perth South, Township of
West Perth, Municipality of
Bluewater, Municipality of
Central Huron, Municipality of
Huron East, Municipality of
South Huron, Municipality of

## List of Municipal Residential Drinking Water System(s)

Type of System (existing or planned)	Drinking Water System Number	Drinking Water System Name	Owner	Operating Authority	Type of Source Water (surface, ground, both)
Existing	220007604	Brucefield Well Supply	Huron East, Municipality of	American Water Canada Corporation	Groundwater
Existing	260007036	Carriage Lane Well Supply	Bluewater, Municipality of	Veolia Water Canada	Groundwater
Existing	220001539	Clinton Well Supply	Central Huron, Municipality of	Central Huron, Municipality of	Groundwater
Existing	220007640	Dundass Well Supply	Central Huron, Municipality of	Central Huron, Municipality of	Groundwater
Existing	220007748	Harbour Lights Well Supply	Bluewater, Municipality of	Veolia Water Canada	Groundwater
Existing	210000791	Lake Huron Primary Water Supply System	Lake Huron Primary Water Supply Joint Board of Management	American Water Canada Corporation	Surface Water
Existing	220008284	S.A.M. Well Supply	Central Huron, Municipality of	Central Huron, Municipality of	Groundwater
Existing	220008293	Vandewetering Subdivision Well Supply	Central Huron, Municipality of	Central Huron, Municipality of	Groundwater
Existing	220001478	Zurich Well Supply	Bluewater, Municipality of	Veolia Water Canada	Groundwater

## List of Drinking Water System(s) Included by Municipal Council Resolution (Not Municipal Residential Drinking Water Systems)

Type of System (existing or planned)	Drinking Water System Number	Drinking Water System Name	Owner	Operating Authority	Type of Source Water (surface, ground, both)	Title of Council Resolution
--------------------------------------	------------------------------	----------------------------	-------	---------------------	--	-----------------------------

## List of Drinking Water Systems Serving Reserve(s) (Not Municipal Residential Drinking Water Systems)

Type of System (existing or planned)	Drinking Water System Number	Drinking Water System Name	Owner	Operating Authority	Type of Source Water (surface, ground, both)	Regulation Reference
--------------------------------------	------------------------------	----------------------------	-------	---------------------	--	----------------------

## List of Fully or Partially Exempted Municipal Residential Drinking Water System(s)

Type of System (existing or planned)	Drinking Water System Number	Drinking Water System Name	Owner	Operating Authority	Type of Source Water (surface, ground, both)	Title of Council Resolution
Existing	220001520	Exeter Water Supply System	South Huron, Municipality of	South Huron, Municipality of	Groundwater	Municipality of South Huron #269-2008
Existing	220001478	Hensall Well Supply	Bluewater, Municipality of	Veolia Water Canada	Groundwater	Need Resolution

Terms of Reference

Existing	220001511	Seaforth Well Supply	American Water Canada Corporation	Huron East, Municipality of	Groundwater	Need Resolution
----------	-----------	----------------------	-----------------------------------	-----------------------------	-------------	-----------------

**List of Drinking Water System(s) Included by Minister of the Environment  
(Not Municipal Residential Drinking Water Systems)**

Type of System (existing or planned)	Drinking Water System Number	Drinking Water System Name	Owner	Operating Authority	Type of Source Water (surface, ground, both)
--------------------------------------	------------------------------	----------------------------	-------	---------------------	--

## List of Matter(s) that Affect Other Source Protection Committees

Source Protection Committees Affected	Source Protection Area	Description of Matter
Thames, Sydenham & Region Source Protection Committee	Thames, Sydenham & Region Source Protection Region	The Lake Huron Primary Water Supply System, which services drinking water to approximately 400,000 people in the Thames, Sydenham & Region Source Protection Region, has its intake at Port Blake in the Ausable Bayfield Source Protection Area.
Thames, Sydenham & Region Source Protection Committee	Thames, Sydenham & Region Source Protection Region	A number of municipalities are shared with the Thames, Sydenham & Region Source Protection Region: the Municipality of West Perth, the Township of Perth South, the Township of Lucan Biddulph, the Township of Adelaide Metcalfe, the Municipality of Middlesex Centre, the Township of Warwick and the Municipality of Lambton Shores. A coordinated approach of the development of WHPAs and IPZs should be undertaken. Likewise, understanding the techniques and outputs from neighbouring SPRs will help create a better representation of the groundwater system as in some cases, the deep groundwater system is recharged outside of the AB SPA. In addition, once the plan development phase begins, shared municipalities desire reasonably consistent policies for drinking water source protection.
Thames, Sydenham & Region Source Protection Committee	Thames, Sydenham & Region Source Protection Region	The two bands Kettle and Stony Point form one First Nation, the Kettle and Stony Point First Nation. The reserve for Stony Point (in transition from former Camp Ipperwash) is within the the ABMV SPR, but the reserve for Kettle Point is about 1 km outside the ABMV SPR in the Thames, Sydenham & Region Source Protection Region. Given the jurisdictional complexities outside of this process, they wish to work with one SPR as the lead. A resolution from Band Council from May 2008 indicates that they wish to work with the ABMV SPR.
Thames, Sydenham & Region Source Protection Committee	Thames, Sydenham & Region Source Protection Region	The Minister may direct a Source Protection Authority to prepare and submit a report on any matter relating to the use of the Great Lakes as a source of drinking water or to assist another Source Protection Authority in preparing a report. In addition, the Minister may establish targets relating to the use of the Great Lakes as a source of drinking water for one of more source protection areas that contribute water to the Great Lakes.

## The Work Plan to Complete the Assessment Report

By Source Protection Area/ Drinking Water System Name	Task	Assigned Lead(s)	Estimated Completion Date	Estimated Cost
Ausable Bayfield Source Protection Area	Undertaking a watershed characterization	Ausable Bayfield and Maitland Valley Source Protection Authorities	2008-Apr-30	\$75,000
Ausable Bayfield Source Protection Area	Conducting a conceptual water budget	Ausable Bayfield and Maitland Valley Source Protection Authorities	2006-Mar-31	\$42,500
Ausable Bayfield Source Protection Area	Conducting a tier 1 water budget analysis and stress assessment	Ausable Bayfield and Maitland Valley Source Protection Authorities	2008-Apr-30	\$145,000
Ausable Bayfield Source Protection Area	Conducting a tier 2 water budget analysis and stress assessment	Ausable Bayfield Maitland Valley Source Protection Committee	2009-Mar-31	\$35,000
Ausable Bayfield Source Protection Area	To conduct a pilot study on non-municipal drinking water systems.	Ausable Bayfield Maitland Valley Source Protection Committee	2010-Mar-31	\$37,500
Ausable Bayfield Source Protection Area	Pre-screening of intake for Kettle and Stony Point First Nation.	Ausable Bayfield Maitland Valley Source Protection Committee	2009-Nov-30	\$170,000
Ausable Bayfield Source Protection Area	Coordinating and supporting projects, undertaking communication initiatives, information management and consultation on the proposed Assessment Report.	Ausable Bayfield Maitland Valley Source Protection Committee	2012-Aug-20	\$1,600,000
Ausable Bayfield Source Protection Area	Delineating and applying vulnerability scores to WHPAs and IPZs; identifying issues, taking inventory of threats and assessing hazards in WHPAs and IPZs; assessing risk in WHPAs and IPZs.	Ausable Bayfield Maitland Valley Source Protection Committee	2010-Aug-20	\$495,000
Ausable Bayfield Source Protection Area	Delineating and applying vulnerability scores to HVAs and SGRAs; identifying issues, taking inventory of threats and assessing hazards in HVAs and SGRAs; assessing risk in HVAs and SGRAs.	Ausable Bayfield Maitland Valley Source Protection Committee	2011-Aug-20	\$100,000

Terms of Reference

<b>Municipal Residential Drinking Water Systems</b>	
<b>Drinking Water Systems By Municipal Resolution</b>	
<b>Drinking Water Systems By Band Resolution</b>	
<b>Fully or Partially Exempt Drinking Water Systems</b>	
<b>Drinking Water Systems Included By Minister</b>	

## The Work Plan to Complete the Source Protection Plan

By Source Protection Area/ Drinking Water System Name	Task	Assigned Lead(s)	Estimated Completion Date	Estimated Cost
Ausable Bayfield Source Protection Area	Coordinating and supporting projects, undertaking communications initiatives, information management, policy development to address drinking water threats (where required), development for monitoring and Great Lakes elements, establishing timelines for policy implementation and consultation on the overall source protection plan.	Ausable Bayfield Maitland Valley Source Protection Committee	2012-Aug-20	\$150,000
<b>Municipal Residential Drinking Water Systems</b>				
<b>Drinking Water Systems By Municipal Resolution</b>				
<b>Drinking Water Systems By Band Resolution</b>				
<b>Fully or Partially Exempt Drinking Water Systems</b>				
<b>Drinking Water Systems Included By Minister</b>				

**The Date the Source Protection Plan is to be Submitted to the Minister for Approval by the Ausable Bayfield Conservation Authority:**

2012-Aug-20

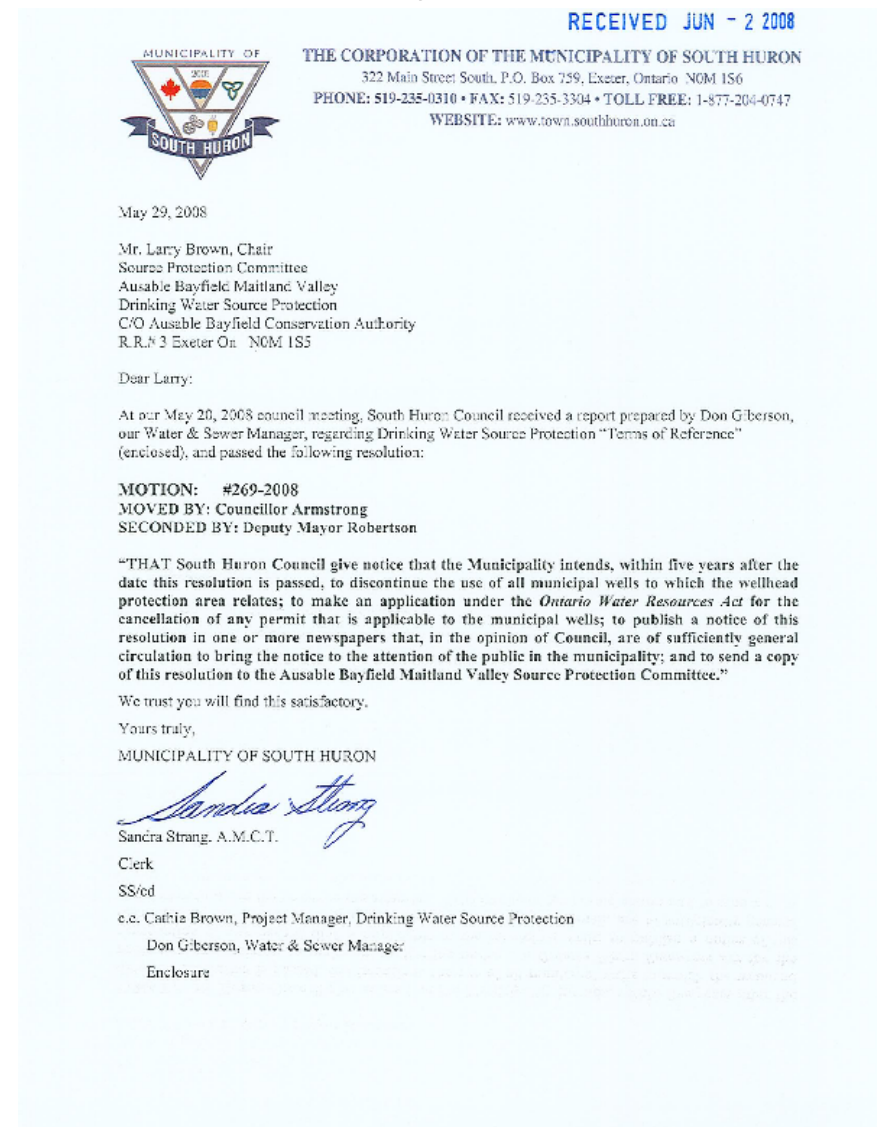
## **Council Resolution(s) to Include Drinking Water System(s)**

## **Council Resolution(s) to Exempt Municipal Residential Drinking Water System(s)**

### **Start of: Municipality of Bluewater - Resolution**

Municipality of Bluewater – Resolution to be forwarded

## Start of: Municipality of South Huron #269-2008



End of: Municipality of South Huron #269-2008

# Detailed Information

## Detailed Information on Municipal Residential Drinking Water System(s)

Drinking Water System Type (planned or existing)	Drinking Water System Number	Drinking Water System Name	Owner	Operating Authority	Source Water Type (surface, ground, both)	Number of Wells
Existing	220008293	Vandewetering Subdivision Well Supply	Central Huron, Municipality of	Central Huron, Municipality of	Groundwater	1
Number of Surface Water Intakes	Comments					
0	The Vandewetering Well Supply is located at 33956 Lane of Pines in the Municipality of Central Huron and was established in 1990. The modern concrete block pumphouse consists of 7 pressure tanks, flow meter, sodium silicate pump, and a sodium hypochlorite pump. There is a chlorine analyzer with associated alarms. The distribution system is compiled of year-round and seasonal residential homes. The well head is located outside the pumphouse.					

Drinking Water System Type (planned or existing)	Drinking Water System Number	Drinking Water System Name	Owner	Operating Authority	Source Water Type (surface, ground, both)	Number of Wells
Existing	220008284	S.A.M. Well Supply	Central Huron, Municipality of	Central Huron, Municipality of	Groundwater	1
Number of Surface Water Intakes	Comments					
0	The SAM Well Supply is located at 77301 Forest Ridge Road. The concrete block pumphouse contains 3 galvanized pressure tanks, flow meter, Sodium Hypochlorite pump, Sodium Silicate pump and the well head. There is a chlorine analyser with associated alarms. The distribution system supplies residential homes.					

Drinking Water System Type (planned or existing)	Drinking Water System Number	Drinking Water System Name	Owner	Operating Authority	Source Water Type (surface, ground, both)	Number of Wells
Existing	260007036	Carriage Lane Well Supply	Bluewater, Municipality of	Veolia Water Canada	Groundwater	1

Terms of Reference

Number of Surface Water Intakes	Comments
0	Carriage Lane is one of two well systems in Bayfield.

Drinking Water System Type (planned or existing)	Drinking Water System Number	Drinking Water System Name	Owner	Operating Authority	Source Water Type (surface, ground, both)	Number of Wells
Existing	220007748	Harbour Lights Well Supply	Bluewater, Municipality of	Veolia Water Canada	Groundwater	1

Number of Surface Water Intakes	Comments
0	

Drinking Water System Type (planned or existing)	Drinking Water System Number	Drinking Water System Name	Owner	Operating Authority	Source Water Type (surface, ground, both)	Number of Wells
Existing	220007604	Brucefield Well Supply	Huron East, Municipality of	American Water Canada Corporation	Groundwater	1

Number of Surface Water Intakes	Comments
0	Well located at the intersection of Highway 4 and County Road 3 is 69.3 m deep with a 200 mm diameter steel casing and a submersible pump rated for 318 L/minute. The pump house contains four 455 L bladder type pressure tanks. Primary disinfection is supplied by ultraviolet reactors, secondary disinfection by sodium hypochlorite injection.

Drinking Water System Type (planned or existing)	Drinking Water System Number	Drinking Water System Name	Owner	Operating Authority	Source Water Type (surface, ground, both)	Number of Wells
Existing	220001539	Clinton Well Supply	Central Huron, Municipality of	Central Huron, Municipality of	Groundwater	3

Number of Surface Water Intakes	Comments
0	The Clinton Well Supply consists of 3 artesian wells. All are 300 plus feet deep. One is located in the work centre building at 17 Park Lane and the other 2 are a short walk from the work centre. The 3 wells pump into a 500,000 gallon underground reservoir. This water is disinfected by gas chlorination prior to entering the reservoir. Since it is an underground system a 450 kW generator supplies constant power if the hydro is out. The pump plant consists of 4 pressure pumps and 1 fire pump.

Terms of Reference

Drinking Water System Type (planned or existing)	Drinking Water System Number	Drinking Water System Name	Owner	Operating Authority	Source Water Type (surface, ground, both)	Number of Wells
Existing	210000791	Lake Huron Primary Water Supply System	Lake Huron Primary Water Supply Joint Board of Management	American Water Canada Corporation	Surface Water	0
Number of Surface Water Intakes	Comments					
1	The Lake Huron Water Treatment Plant (WTP) employs pre-chlorination, screening, powder activated carbon addition (seasonally on an as-required basis), coagulation, flocculation, sedimentation, dual-media filtration, and post-chlorination to treat raw water obtained from Lake Huron. The WTP intake crib and raw water intake pipe have an estimated gross capacity of 454.6 Megalitres/day (MLD). The WTP rated capacity is 340.0 MLD. Water is pumped from the plant through 1200 mm diameter water main, sections of which are twinned, to various communities en route to a terminal reservoir located to the north of the City of London. The drinking water system is monitored at various locations throughout the system via a Supervisory Control and Data Acquisition (SCADA) system.					

Drinking Water System Type (planned or existing)	Drinking Water System Number	Drinking Water System Name	Owner	Operating Authority	Source Water Type (surface, ground, both)	Number of Wells
Existing	220001478	Zurich Well Supply	Bluewater, Municipality of	Veolia Water Canada	Groundwater	3
Number of Surface Water Intakes	Comments					
0						

Drinking Water System Type (planned or existing)	Drinking Water System Number	Drinking Water System Name	Owner	Operating Authority	Source Water Type (surface, ground, both)	Number of Wells
Existing	220007640	Dundass Well Supply	Central Huron, Municipality of	Central Huron, Municipality of	Groundwater	1
Number of Surface Water Intakes	Comments					
0	Seasonal system.					

**Detailed Information on Drinking Water System(s) Included by Municipal Council Resolution  
(Not Municipal Residential Drinking Water Systems)**

**Detailed Information on Drinking Water System(s) Included by Bands Serving Reserve(s)  
(Not Municipal Residential Drinking Water Systems)**

### Detailed Information on Fully or Partially Exempted Municipal Residential Drinking Water System(s)

Drinking Water System Type (planned or existing)	Drinking Water System Number	Drinking Water System Name	Owner	Operating Authority	Source Water Type (surface, ground, both)	Number of Wells
Existing	220001511	Seaforth Well Supply	American Water Canada Corporation	Huron East, Municipality of	Groundwater	1
Number of Surface Water Intakes	Comments			Partial Exemption Description		
0	The Seaforth Well Supply is comprised of three wells: two wells on Welsh Street in the Maitland Valley Source Protection Area and the Chalk Street well in the Ausable Bayfield Source Protection Area. The Chalk Street Well pump house is located at 44 Chalk Street South, Seaforth. A drilled well 63.4 m deep with a 300 mm steel casing to a depth of 45.72 m, followed by a 250 mm steel casing and submersible pump rated for 24 L/s. The well discharges directly to the distribution system following sodium hypochlorite injection. This well is only being used as a back up well and requires Health Unit and MOE approval prior to starting due to radionuclide levels above MAC.			The exemption is only for the Chalk St. well which is intended to be decommissioned in spring 2009.		

Drinking Water System Type (planned or existing)	Drinking Water System Number	Drinking Water System Name	Owner	Operating Authority	Source Water Type (surface, ground, both)	Number of Wells
Existing	220001520	Exeter Water Supply System	South Huron, Municipality of	South Huron, Municipality of	Groundwater	5
Number of Surface Water Intakes	Comments			Partial Exemption Description		
0	The Town of Exeter will be supplied by the Lake Huron Primary Water Supply System with an intake at Port Blake.					

Drinking Water System Type (planned or existing)	Drinking Water System Number	Drinking Water System Name	Owner	Operating Authority	Source Water Type (surface, ground, both)	Number of Wells
Existing	220001478	Hensall Well Supply	Bluewater, Municipality of	Veolia Water Canada	Groundwater	3
Number of Surface	Comments			Partial Exemption Description		

Terms of Reference

Water Intakes		
0	Well No. 4 serves 1,200 residents. Wells No. 1 and 2 are available on a standby capacity. Municipal Council resolution pending to exempt this system from the Terms of Reference.	

**Detailed Information on Drinking Water System(s) Included by the Minister of the Environment  
(Not Municipal Residential Drinking Water Systems)**

## Detailed Work Plan to Complete the Assessment Report

By Source Protection Area	Task	Assigned Lead(s)	Estimated Start Date	Estimated Completion Date
Ausable Bayfield Source Protection Area	Undertaking a watershed characterization	Ausable Bayfield and Maitland Valley Source Protection Authorities	2005-Feb-07	2008-Apr-30
<b>Comments</b>		<b>Defined Geographic Area</b>		<b>Estimated Cost</b>
Hiring several consultants and internal staff costs. Costs also include peer review, printing and capacity building presentations to staff and SPC members.		Ausable Bayfield Maitland Valley Source Protection Region		\$75,000

By Source Protection Area	Task	Assigned Lead(s)	Estimated Start Date	Estimated Completion Date
Ausable Bayfield Source Protection Area	Conducting a conceptual water budget	Ausable Bayfield and Maitland Valley Source Protection Authorities	2005-Mar-07	2006-Mar-31
<b>Comments</b>		<b>Defined Geographic Area</b>		<b>Estimated Cost</b>
Hiring consultants, peer review, trial modeling, printing.		Ausable Bayfield Maitland Valley Source Protection Region		\$42,500

By Source Protection Area	Task	Assigned Lead(s)	Estimated Start Date	Estimated Completion Date
Ausable Bayfield Source Protection Area	Conducting a tier 1 water budget analysis and stress assessment	Ausable Bayfield and Maitland Valley Source Protection Authorities	2006-Mar-06	2008-Apr-30
<b>Comments</b>		<b>Defined Geographic Area</b>		<b>Estimated Cost</b>
Hiring consultants, peer review, trial modeling, and printing.		The Tier 1 Water Budget includes the whole Source Protection Region divided into subwatersheds. In the Ausable Bayfield, these subwatersheds are Ausable and Mud Creek, Parkhill, Bayfield, ABCA Gullies, Goderich and Bayfield Gullies.		\$145,000

By Source Protection Area	Task	Assigned Lead(s)	Estimated Start Date	Estimated Completion Date
Ausable Bayfield Source Protection Area	Conducting a tier 2 water budget analysis and stress assessment	Ausable Bayfield Maitland Valley Source Protection Committee	2008-May-01	2009-Mar-31
<b>Comments</b>		<b>Defined Geographic Area</b>		<b>Estimated Cost</b>
Modelling of Bayfield Gullies subwatershed, writing and printing document.		Bayfield Gullies		\$35,000

Terms of Reference

By Source Protection Area	Task	Assigned Lead(s)	Estimated Start Date	Estimated Completion Date
Ausable Bayfield Source Protection Area	To conduct a pilot study on non-municipal drinking water systems.	Ausable Bayfield Maitland Valley Source Protection Committee	2009-Apr-01	2010-Mar-31
<b>Comments</b>		<b>Defined Geographic Area</b>		<b>Estimated Cost</b>
Hiring consultants, modelling, mapping, inventorying issues, assessing threats, creation of report on pilot study.		1-2 hamlets in the Ausable Bayfield Source Protection Area.		\$37,500

By Source Protection Area	Task	Assigned Lead(s)	Estimated Start Date	Estimated Completion Date
Ausable Bayfield Source Protection Area	Pre-screening of intake for Kettle and Stony Point First Nation.	Ausable Bayfield Maitland Valley Source Protection Committee	2008-Jun-02	2009-Nov-30
<b>Comments</b>		<b>Defined Geographic Area</b>		<b>Estimated Cost</b>
Delineation and applying vulnerability scores to IPZs; identifying issues, taking inventory of threats and assessing hazards in the IPZ.. Band resolution was forwarded to the Minister in May 2008		The two intakes of the First Nation, one at the Stony Point reserve and the other at Kettle Point reserve.		\$170,000

By Source Protection Area	Task	Assigned Lead(s)	Estimated Start Date	Estimated Completion Date
Ausable Bayfield Source Protection Area	Coordinating and supporting projects, undertaking communication initiatives, information management and consultation on the proposed Assessment Report.	Ausable Bayfield Maitland Valley Source Protection Committee	2005-Feb-07	2012-Aug-20
<b>Comments</b>		<b>Defined Geographic Area</b>		<b>Estimated Cost</b>
Staff costs, project management, consultant costs, communications materials, office supplies, office rental, Source Protection Committee per diem and meeting funds, Working Group meeting funds, consultation meetings and advertising.		Ausable Bayfield Source Protection Area		\$1,600,000

By Source Protection Area	Task	Assigned Lead(s)	Estimated Start Date	Estimated Completion Date
Ausable Bayfield Source Protection Area	Delineating and applying vulnerability scores to WHPAs and IPZs; identifying issues, taking inventory of threats and assessing hazards in WHPAs and IPZs; assessing risk in WHPAs and IPZs.	Ausable Bayfield Maitland Valley Source Protection Committee	2006-Apr-03	2010-Aug-20

Terms of Reference

<b>Comments</b>		<b>Defined Geographic Area</b>	<b>Estimated Cost</b>	
Technical money for modelling, calculating vulnerability scores, window assessment, staff information meetings.		Wellhead protection areas (WHPAs) and intake protection zones (IPZs) in the Ausable Bayfield Source Protection Area.	\$495,000	

---

<b>By Source Protection Area</b>	<b>Task</b>	<b>Assigned Lead(s)</b>	<b>Estimated Start Date</b>	<b>Estimated Completion Date</b>
Ausable Bayfield Source Protection Area	Delineating and applying vulnerability scores to HVAs and SGRAs; identifying issues, taking inventory of threats and assessing hazards in HVAs and SGRAs; assessing risk in HVAs and SGRAs.	Ausable Bayfield Maitland Valley Source Protection Committee	2009-Apr-06	2011-Aug-20

<b>Comments</b>		<b>Defined Geographic Area</b>	<b>Estimated Cost</b>	
Technical money for modelling, calculating vulnerability scores, window assessment, staff information meetings.		Highly vulnerable areas (HVAs) and significant groundwater recharge areas (SGRAs) in the Ausable Bayfield Source Protection Area.	\$100,000	

### Detailed Work Plan to Complete the Source Protection Plan

<b>By Source Protection Area</b>	<b>Task</b>	<b>Assigned Lead(s)</b>	<b>Estimated Start Date</b>	<b>Estimated Completion Date</b>
Ausable Bayfield Source Protection Area	Coordinating and supporting projects, undertaking communications initiatives, information management, policy development to address drinking water threats (where required), development for monitoring and Great Lakes elements, establishing timelines for policy implementation and consultation on the overall source protection plan.	Ausable Bayfield Maitland Valley Source Protection Committee	2009-Apr-01	2012-Aug-20

<b>Comments</b>		<b>Defined Geographic Area</b>	<b>Estimated Cost</b>	
Consultation and meeting costs, ad hoc working group meetings, planners' technical working group.		Ausable Bayfield Source Protection Area.	\$150,000	

## Summary of Financial Statistics

	Tasks Done by Source Protection Area or Drinking Water System	Estimated Costs for Tasks Under the Assessment Report	Estimated Costs for Tasks Under the Source Protection Plan	Subtotal
	Ausable Bayfield Source Protection Area	\$5,735,000	\$300,000	\$6,035,000
<b>Municipal Residential Drinking Water Systems</b>				
	Brucefield Well Supply			
	Carriage Lane Well Supply			
	Clinton Well Supply			
	Dundass Well Supply			
	Exeter Water Supply System			
	Harbour Lights Well Supply			
	Hensall Well Supply			
	Lake Huron Primary Water Supply System			
	S.A.M. Well Supply			
	Seaforth Well Supply			
	Vandewatering Subdivision Well Supply			
	Zurich Well Supply			
<b>Drinking Water Systems By Municipal Resolution</b>				
<b>Drinking Water Systems By Band Resolutions</b>				
<b>Drinking Water Systems Included By Minister</b>				
<b>Total Estimated Costs</b>		<b>\$2,700,000</b>	<b>\$150,000</b>	<b>\$2,850,000</b>

## Estimated Costs for Tasks by Fiscal Year

Fiscal Year defined as April 1 to March 31

Drinking Water System Category / Source Protection Area	Tasks	Fiscal Year 04/05	Fiscal Year 05/06	Fiscal Year 06/07	Fiscal Year 07/08	Fiscal Year 08/09	Fiscal Year 09/10	Fiscal Year 10/11	Fiscal Year 11/12	Fiscal Year 12/13
<b>Ausable Bayfield Source Protection Area</b>										
	Undertaking a watershed characterization	\$15,000	\$15,000	\$15,000	\$15,000	\$15,000	\$0	\$0	\$0	\$0
	Conducting a conceptual water budget	\$21,250	\$21,250	\$0	\$0	\$0	\$0	\$0	\$0	\$0
	Conducting a tier 1 water budget analysis and stress assessment	\$0	\$36,250	\$36,250	\$36,250	\$36,250	\$0	\$0	\$0	\$0
	Conducting a tier 2 water budget analysis and stress assessment	\$0	\$0	\$0	\$0	\$35,000	\$0	\$0	\$0	\$0
	Coordinating and supporting projects, undertaking communication initiatives, information management and consultation on the proposed Assessment Report.	\$177,778	\$177,778	\$177,778	\$177,778	\$177,778	\$177,778	\$177,778	\$177,778	\$177,778
	Delineating and applying vulnerability scores to HVAs and SGRAs; identifying issues, taking inventory of threats and assessing hazards in HVAs and SGRAs; assessing risk in HVAs and SGRAs.	\$0	\$0	\$0	\$0	\$0	\$33,333	\$33,333	\$33,333	\$0
	Delineating and applying vulnerability scores to WHPAs and IPZs; identifying	\$0	\$0	\$99,000	\$99,000	\$99,000	\$99,000	\$99,000	\$0	\$0

Terms of Reference

Drinking Water System Category / Source Protection Area	Tasks	Fiscal Year 04/05	Fiscal Year 05/06	Fiscal Year 06/07	Fiscal Year 07/08	Fiscal Year 08/09	Fiscal Year 09/10	Fiscal Year 10/11	Fiscal Year 11/12
	issues, taking inventory of threats and assessing hazards in WHPAs and IPZs; assessing risk in WHPAs and IPZs.								
	Pre-screening of intake for Kettle and Stony Point First Nation.	\$0	\$0	\$0	\$0	\$85,000	\$85,000	\$0	\$0
	To conduct a pilot study on non-municipal drinking water systems.	\$0	\$0	\$0	\$0	\$0	\$37,500	\$0	\$0
	Coordinating and supporting projects, undertaking communications initiatives, information management, policy development to address drinking water threats (where required), development for monitoring and Great Lakes elements, establishing timelines for policy implementation and consultation on the overall source protection plan.	\$0	\$0	\$0	\$0	\$0	\$37,500	\$37,500	\$37,500
<b>Municipal Residential Drinking Water Systems</b>									
<b>Drinking Water Systems By Municipal Resolution</b>									
<b>Drinking Water Systems by Band Resolution</b>									
<b>Drinking Water Systems Included by Minister</b>									
<b>Fiscal Year Total</b>		<b>\$214,028</b>	<b>\$250,278</b>	<b>\$328,028</b>	<b>\$328,028</b>	<b>\$448,028</b>	<b>\$470,111</b>	<b>\$347,611</b>	<b>\$248,611</b>

## Process Checklist

Regulatory Process	Completion Date	Done By
Give a copy of the comments on proposed terms of reference to the source protection committee.	2008-Oct-20	SPAuthority
Make the draft proposed terms of reference available at other locations.	2008-May-07	SPCommittee
Make the proposed terms of reference available at other locations.	2008-Sep-03	SPCommittee
Notice for consultation on draft proposed ToR includes information on public meeting scheduled at least 21 days after newspaper notice is published.	2008-May-07	SPCommittee
Notify band Chiefs on the commencement of the terms of reference.	2008-Jan-14	SPCommittee
Notify municipal clerks on the commencement of the terms of reference.	2008-Jan-07	SPCommittee
Post proposed terms of reference on the Internet for 30 days.	2008-Sep-03	SPCommittee
Post draft proposed terms of reference on Internet.	2008-May-07	SPCommittee
Provide a copy of draft to the chiefs of bands whose reserves are located in the source protection area.	2008-May-07	SPCommittee
Provide a copy of draft proposed terms of reference to the clerks of municipalities located in the source protection area.	2008-May-07	SPCommittee
Provide a copy of proposed terms of reference to the source protection authority.	2008-Aug-20	SPCommittee
Provide a copy of proposed terms of reference to the chiefs of bands whose reserves are located in the source protection area.	2008-Sep-03	SPCommittee
Provide a copy of proposed terms of reference to the clerks of municipalities located in the source protection area.	2008-Sep-03	SPCommittee
Provide copy of draft proposed ToR to chairs of SPCs who have been listed in table that describes matters that affect other source protection areas.	2008-May-07	SPCommittee
Provide any unresolved comments from municipalities and bands to the Minister as part of the approval package for the proposed terms of reference.	2008-Oct-20	SPAuthority
Provide any unresolved comments from municipalities and bands to the source protection authority on the draft proposed terms of reference.	2008-Aug-20	SPCommittee
Publish newspaper notice to publicly view draft proposed ToR on Internet and at other locations (as determined by the source protection committee).	2008-May-07	SPCommittee
Receive comments from the 30 day Internet posting from the public, municipalities, bands, and other stakeholders.	2008-Oct-02	SPAuthority
Notice for consultation on draft proposed ToR includes requests for comments submitted within 35 days of notice published in the newspaper.	2008-May-07	SPCommittee
Municipal council resolutions have been passed agreeing upon work.	Not Applicable	SPCommittee
Give copy of draft proposed ToR to groups created pursuant to Great Lakes Water Quality Agreement & involved in developing/implementing RAPs & LaMPs.	Not Applicable	SPCommittee

Terms of Reference

Make provisions to consider Great Lakes Agreements.	Not Applicable	SPCommittee
---	----------------	-------------

### Appendix: Full Task Descriptions

Subject Area	Task Name	Full Task Description
Assessment Report Preparation	Coordinating and supporting projects for the assessment report	Undertaking administrative support, staffing, management support, and training necessary to provide project coordination for the assessment report components and direct support to the source protection committee.
Assessment Report Preparation	Undertaking communications initiatives for the assessment report	Local area engagement, outreach and creation of communications products that support the assessment report process.
Assessment Report Preparation	Information management for the assessment report preparation	Conducting overall data management, data sharing agreements, standards, mapping, software and maintenance.
Assessment Report Preparation	Undertaking a watershed characterization	Identifying and describing watersheds in the source protection area. May include water quality analysis and peer review for water quality analysis. Details on how to complete this task will be available in the Assessment Report regulation, Director's rules, and guidance when they are developed.
Assessment Report Preparation	Conducting a conceptual water budget	Describing the overall flow system dynamics for each watershed in the source protection area taking into consideration surface water and groundwater features, land cover (e.g. proportion of urban vs. rural uses), human-made structures (e.g. dams, channel diversions, water crossings), and water takings. Details on how to complete this task will be available in the Assessment Report regulation, Director's rules, and guidance when they are developed.
Assessment Report Preparation	Conducting a tier 1 water budget analysis and stress assessment	Conducting a tier 1 water budget analysis, stress assessment, and delineation of significant groundwater recharge areas. May also include the identification of water quantity concerns and an analysis of uncertainty. Details on how to complete this task will be available in the Assessment Report regulation, Director's rules, and guidance when they are developed.
Assessment Report Preparation	Conducting a tier 2 water budget analysis and stress assessment	If determined necessary from a tier 1 water budget analysis and stress assessment, conducting a tier 2 water budget analysis and stress assessment, and refining the delineation of significant groundwater recharge areas. May also include the identification of water quantity concerns and an analysis of uncertainty. Details on how to complete this task will be available in the Assessment Report regulation, Director's rules, and guidance when they are developed.
Assessment Report Preparation	Conducting a tier 3 water budget analysis and water quantity risk assessment	If determined necessary from a tier 2 water budget analysis and stress assessment, conducting a tier 3 water budget analysis and water quantity risk assessment. May include identifying significant, moderate and low water quantity threats. May also include consultation with property owners/residents/stakeholders impacted by a significant drinking water threat scoring and an analysis of uncertainty. Details on how to complete this task will be available in the Assessment Report regulation, Director's rules, and guidance when they are developed.
Assessment Report Preparation	Delineating and applying vulnerability scores to HVAs	Delineating the location and extent of highly vulnerable aquifers in the source protection area and applying vulnerability scores. An uncertainty analysis may be included in this task. Details on how to complete this task will be available in the Assessment Report regulation, Director's rules, and guidance when they are developed.

Terms of Reference

Assessment Report Preparation	Identifying issues, inventorying threats and assessing hazards in HVAs	Listing and describing drinking water quality issues, inventorying threats and assessing hazards (including uncertainty analysis) in the highly vulnerable aquifers. Details on how to complete this task will be available in the Assessment Report regulation, Director's rules, and guidance when they are developed.
Assessment Report Preparation	Assessing risks in HVAs	Identifying any significant, moderate, low, and negligible drinking water threats, undertaking an issues evaluation, and analysing uncertainty in highly vulnerable aquifers. Details on how to complete this task will be available in the Assessment Report regulation, Director's rules, and guidance when they are developed.
Assessment Report Preparation	Applying vulnerability scores to SGRAs	Applying vulnerability scores to significant groundwater recharge areas in the source protection area (delineated in the water budget process). Details on how to complete this task will be available in the Assessment Report regulation, Director's rules, and guidance when they are developed.
Assessment Report Preparation	Identifying issues, inventorying threats and assessing hazards in SGRAs	Listing and describing drinking water quality issues, inventorying threats and assessing hazards (including uncertainty analysis) in the significant groundwater recharge areas. Details on how to complete this task will be available in the Assessment Report regulation, Director's rules, and guidance when they are developed.
Assessment Report Preparation	Assessing risk in SGRAs	Identifying any significant, moderate, low, and negligible drinking water threats, undertaking an issues evaluation, and analysing uncertainty in significant groundwater recharge areas. Details on how to complete this task will be available in the Assessment Report regulation, Director's rules, and guidance when they are developed.
Assessment Report Preparation	Delineating and applying vulnerability scores to WHPAs or IPZs	Delineating the location and extent of the vulnerable area around a drinking water system (wellhead protection areas for drinking water systems using groundwater or intake protection zones for drinking water systems withdrawing from surface water) in the source protection area and applying a vulnerability score. Uncertainty analysis and peer review may be required. In addition, consultation with property owners/residents/stakeholders affected by the delineation and scoring for these two vulnerable areas may be required. Details on how to complete this task will be available in the Assessment Report regulation, Director's rules, and guidance when they are developed.
Assessment Report Preparation	Identifying issues, inventorying threats and assessing hazards in WHPAs or IPZs	Listing and describing drinking water quality issues, inventorying threats and assessing hazards (including uncertainty analysis) in wellhead protection areas and/or intake protection zones. Details on how to complete this task will be available in the Assessment Report regulation, Director's rules, and guidance when they are developed.
Assessment Report Preparation	Assess risk in WHPAs or IPZs	Identifying any significant, moderate, low, and negligible drinking water threats, undertaking an issues evaluation, and analysing uncertainty in wellhead protection areas or intake protection zones. Consultation may be required with stakeholders impacted by significant drinking water threats scoring. Consultation with adjacent source protection areas or regions may also be required for shared Great Lakes drinking water issues. Details on how to complete this task will be available in the Assessment Report regulation, Director's rules, and guidance when they are developed.
Assessment Report Preparation	Consultation on the overall proposed assessment report	Meeting the legislative and regulatory requirements on the consultation and submission process of the proposed assessment report. Details on how to complete this task will be available in the Assessment Report regulation, Director's rules, and guidance when they are developed.
Assessment Report		If required, add other tasks to complete the assessment report. Describe in detail.

Terms of Reference

Preparation		
Source Protection Plan Preparation	Coordinating and supporting projects for the source protection plan (SPP)	Undertaking administrative support, staffing, management support, and training necessary to provide project coordination for the source protection plan components and direct support to the source protection committee.
Source Protection Plan Preparation	Undertaking communications initiatives for the source protection plan	Local area engagement, outreach and creation of communications products that support the source protection plan process.
Source Protection Plan Preparation	Information management for source protection plan preparation	Conducting overall data management, data sharing agreements, standards, mapping, software and maintenance.
Source Protection Plan Preparation	Policy development to address drinking water threats (where required and/or permissible in Act/Regs)	Policy development to address drinking water threats (where required and/or permissible in the Act and source protection plan regulation). Detailed requirements and guidance will be provided in the Source Protection Plan regulation and guidance document when they are developed.
Source Protection Plan Preparation	Policy development for monitoring (where required, advisable and/or permissible in Act & Regs)	Policy development for monitoring activities (where required, advisable and/or permissible in the Act and source protection plan regulation), including determining who is responsible for implementing these policies. Detailed requirements and guidance will be provided in the Source Protection Plan regulation and guidance document when they are developed.
Source Protection Plan Preparation	Policy development for Great Lakes elements (where required/permissible in Act & Regs)	Policy development for Great Lakes associated elements (where directed by the Minister and required or permissible in the Act and source protection plan regulation), including monitoring policies to assist in implementing and determining the effectiveness of achieving Great Lake target(s) policies, determining who is responsible for implementing those policies, and determining the need to identify any of these policies as "designated Great Lakes policies". Detailed requirements and guidance will be provided in the Source Protection Plan regulation and guidance document when they are developed.
Source Protection Plan Preparation	Establishing timelines for policy implementation	Establishing timelines for policy implementation after all policies for the SPP are developed, giving consideration to the policies developed, key players affected, capacity for implementation, the assessed risks, and natural, social, and economic considerations, including local community interests/needs. Detailed requirements and guidance will be provided in the Source Protection Plan regulation and guidance document when they are developed.
Source Protection Plan Preparation	Consultation on the overall proposed source protection plan	Consultation and submission process of the overall proposed source protection plan. Details on how to conduct the consultations on the overall proposed source protection plan will be provided in the Source Protection Plan regulation and guidance document when they are developed.
Source Protection Plan Preparation		If required, add other tasks to complete the source protection plan. Describe in detail.

# Terms of Reference for Maitland Valley Source Protection Area

Ausable Bayfield Maitland Valley Source Protection Committee

2008-Jul-30

# Table of Contents

Map of Source Protection Area ..... 3

Map of Source Protection Region ..... 4

List of Municipalities Located in the Maitland Valley Source Protection Area ..... 5

List of Municipal Residential Drinking Water System(s) ..... 6

List of Drinking Water System(s) Included by Municipal Council Resolution ..... 8

    (Not Municipal Residential Drinking Water Systems) ..... 8

List of Drinking Water Systems Serving Reserve(s) ..... 8

    (Not Municipal Residential Drinking Water Systems) ..... 8

List of Fully or Partially Exempted Municipal Residential Drinking Water System(s) ..... 8

List of Drinking Water System(s) Included by Minister of the Environment ..... 9

    (Not Municipal Residential Drinking Water Systems) ..... 9

List of Matter(s) that Affect Other Source Protection Committees ..... 10

The Work Plan to Complete the Assessment Report ..... 11

The Work Plan to Complete the Source Protection Plan ..... 13

The Date the Source Protection Plan is to be Submitted to the Minister for Approval by the Maitland Valley Conservation Authority: ..... 14

Council Resolution(s) to Include Drinking Water System(s) ..... 14

Council Resolution(s) to Exempt Municipal Residential Drinking Water System(s) ..... 14

Detailed Information on Municipal Residential Drinking Water System(s) ..... 15

Detailed Information on Drinking Water System(s) Included by Municipal Council Resolution ..... 22

    (Not Municipal Residential Drinking Water Systems) ..... 22

Detailed Information on Drinking Water System(s) Included by Bands Serving Reserve(s) ..... 22

    (Not Municipal Residential Drinking Water Systems) ..... 22

Detailed Information on Fully or Partially Exempted Municipal Residential Drinking Water System(s) ..... 22

Detailed Information on Drinking Water System(s) Included by the Minister of the Environment ..... 22

    (Not Municipal Residential Drinking Water Systems) ..... 22

Detailed Work Plan to Complete the Assessment Report ..... 23

Detailed Work Plan to Complete the Source Protection Plan ..... 26

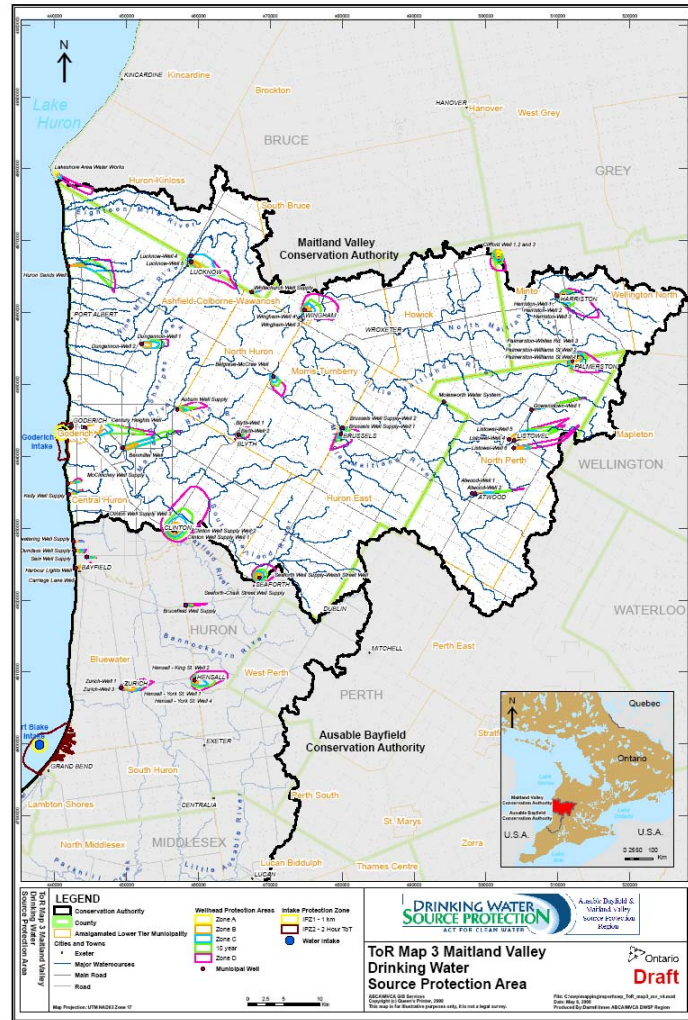
Summary of Financial Statistics ..... 27

Estimated Costs for Tasks by Fiscal Year ..... 29

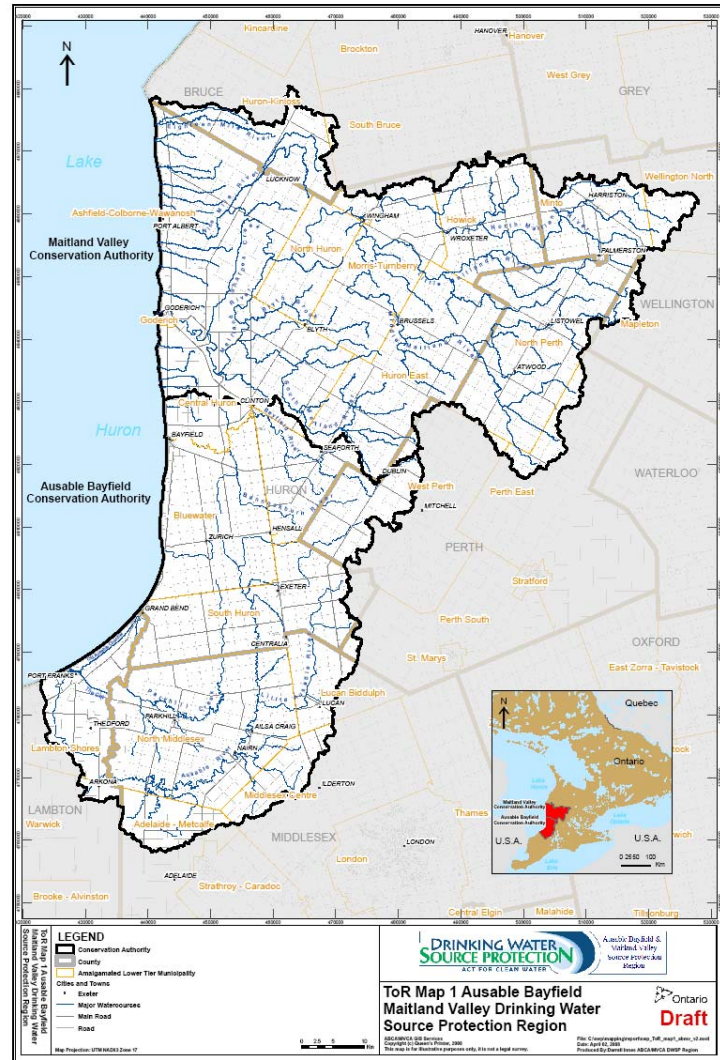
Process Checklist ..... 31

Appendix: Full Task Descriptions ..... 33

# Map of Source Protection Area



# Map of Source Protection Region



## List of Municipalities Located in the Maitland Valley Source Protection Area

<b>Legal Name of Municipality</b>
Bruce, County of
Huron, County of
Perth, County of
Wellington, County of
Huron-Kinloss, Township of
South Bruce, Municipality of
Goderich, Town of
Ashfield-Colborne-Wawanosh, Township of
Central Huron, Municipality of
Howick, Township of
Huron East, Municipality of
Morris-Turnberry
North Huron, Township of
Perth East, Township of
North Perth, Municipality of
West Perth, Municipality of
Mapleton, Township of
Minto, Town of
Wellington North, Township of

## Terms of Reference

**List of Municipal Residential Drinking Water System(s)**

<b>Type of System (existing or planned)</b>	<b>Drinking Water System Number</b>	<b>Drinking Water System Name</b>	<b>Owner</b>	<b>Operating Authority</b>	<b>Type of Source Water (surface, ground, both)</b>
Existing	260065260	Atwood Well Supply	North Perth, Municipality of	North Perth, Municipality of	Groundwater
Existing	260005281	Auburn Well Supply	Central Huron, Municipality of	Central Huron, Municipality of	Groundwater
Existing	220008257	Belgrave Well Supply	Morris-Turnberry, Municipality of	Veolia Water Canada	Groundwater
Existing	220007508	Benmiller Inn Well Supply	Ashfield-Colborne- Wawanosh, Township of	Veolia Water Canada	Groundwater
Existing	220001496	Blyth Well Supply	North Huron, Township of	North Huron, Township of	Groundwater
Existing	220001487	Brussels Well Supply	Huron East, Municipality of	American Water Services Canada	Groundwater
Existing	220008499	Century Heights Subdivision Well Supply	Ashfield-Colborne- Wawanosh, Township of	Veolia Water Canada	Groundwater
Existing	260007842	Dungannon Well Supply	Ashfield-Colborne- Wawanosh, Township of	Veolia Water Canada	Groundwater
Existing	210000238	Goderich Water Treatment Plant	Goderich, Town of	Veolia Water Canada	Surface Water
Existing	220003975	Gowanstown Subdivision Well Supply	North Perth, Municipality of	North Perth, Municipality of	Groundwater
Existing	220000077	Harriston Well Supply	Minto, Town of	Minto, Town of	Groundwater
Existing	260082134	Humphrey Well Supply	North Huron, Township of	North Huron, Township of	Groundwater
Existing	220007757	Huron Sands Well Supply	Ashfield-Colborne- Wawanosh,	Veolia Water Canada	Groundwater

## Terms of Reference

			Township of		
Existing	220007793	Kelly Well Supply	Central Huron, Municipality of	Central Huron, Municipality of	Groundwater
Existing	220000512	Listowel Well Supply	North Perth, Municipality of	North Perth, Municipality of	Groundwater
Existing	220002663	Lucknow Well Supply	Huron-Kinloss, Township of	Veolia Water Canada	Groundwater
Existing	220007837	McClinchey Well Supply	Central Huron, Municipality of	Central Huron, Municipality of	Groundwater
Existing	260034996	Molesworth Well Supply	North Perth, Municipality of	North Perth, Municipality of	Groundwater
Existing	22000059	Palmerston Well Supply	Minto, Town of	Minto, Town of	Groundwater
Existing	220001511	Seaforth Well Supply	Huron East, Municipality of	American Water Canada Corporation	Groundwater
Existing	220008863	Whitechurch Well Supply	Huron-Kinloss, Township of	Veolia Water Canada	Groundwater
Existing	220001502	Wingham Well Supply	North Huron, Township of	North Huron, Township of	Groundwater

## List of Drinking Water System(s) Included by Municipal Council Resolution

(Not Municipal Residential Drinking Water Systems)

Type of System (existing or planned)	Drinking Water System Number	Drinking Water System Name	Owner	Operating Authority	Type of Source Water (surface, ground, both)	Title of Council Resolution
--------------------------------------	------------------------------	----------------------------	-------	---------------------	--	-----------------------------

## List of Drinking Water Systems Serving Reserve(s)

(Not Municipal Residential Drinking Water Systems)

Type of System (existing or planned)	Drinking Water System Number	Drinking Water System Name	Owner	Operating Authority	Type of Source Water (surface, ground, both)	Regulation Reference
--------------------------------------	------------------------------	----------------------------	-------	---------------------	--	----------------------

## List of Fully or Partially Exempted Municipal Residential Drinking Water System(s)

Type of System (existing or planned)	Drinking Water System Number	Drinking Water System Name	Owner	Operating Authority	Type of Source Water (surface, ground, both)	Title of Council Resolution
--------------------------------------	------------------------------	----------------------------	-------	---------------------	--	-----------------------------

**List of Drinking Water System(s) Included by Minister of the Environment  
(Not Municipal Residential Drinking Water Systems)**

Type of System (existing or planned)	Drinking Water System Number	Drinking Water System Name	Owner	Operating Authority	Type of Source Water (surface, ground, both)
--	------------------------------	-------------------------------	-------	---------------------	--

## List of Matter(s) that Affect Other Source Protection Committees

Source Protection Committees Affected	Source Protection Area	Description of Matter
Saugeen, Grey Sauble, Northern Bruce Peninsula Source Protection Committee	Saugeen Valley Source Protection Area	A number of municipalities are shared with the Saugeen, Grey Sauble, Northern Bruce Peninsula Source Protection Region: the Municipality of South Bruce, the Township of Huron-Kinloss, the Municipality of Morris-Turnberry, the Township of Howick, the Town of Minto and the Township of Wellington North. A coordinated approach of the development of WHPAs and IPZs should be undertaken. Likewise, understanding the techniques and outputs from neighbouring SPRs will help create a better representation of the groundwater system as in some cases, the deep groundwater system is recharged outside of the MV SPA. In addition, once the plan development phase begins, shared municipalities desire reasonably consistent policies for drinking water source protection.
Lake Erie Source Protection Committee	Grand River Source Protection Area	A number of municipalities are shared with the Lake Erie Source Protection Region: the Municipality of West Perth, the Municipality of Perth East, the Township of Mapleton and the Township of Wellington North. A coordinated approach of the development of WHPAs and IPZs should be undertaken. Likewise, understanding the techniques and outputs from neighbouring SPRs will help create a better representation of the groundwater system as in some cases, the deep groundwater system is recharged outside of the MV SPA. In addition, once the plan development phase begins, shared municipalities desire reasonably consistent policies for drinking water source protection.
Saugeen, Grey Sauble, Northern Bruce Peninsula Source Protection Committee	Saugeen Valley Source Protection Area	The Minister may direct a Source Protection Authority to prepare and submit a report on any matter relating to the use of the Great Lakes as a source of drinking water or to assist another Source Protection Authority in preparing a report. In addition, the Minister may establish targets relating to the use of the Great Lakes as a source of drinking water for one of more source protection areas that contribute water to the Great Lakes.

## The Work Plan to Complete the Assessment Report

By Source Protection Area/ Drinking Water System Name	Task	Assigned Lead(s)	Estimated Completion Date	Estimated Cost
Maitland Valley Source Protection Area	Undertaking a watershed characterization	Ausable Bayfield and Maitland Valley Source Protection Authorities	2008-Apr-30	\$75,000
Maitland Valley Source Protection Area	Conducting a conceptual water budget	Ausable Bayfield and Maitland Valley Source Protection Authorities	2006-Mar-31	\$42,500
Maitland Valley Source Protection Area	Conducting a tier 1 water budget analysis and stress assessment	Ausable Bayfield and Maitland Valley Source Protection Authorities	2008-Apr-30	\$145,000
Maitland Valley Source Protection Area	Conducting a tier 2 water budget analysis and stress assessment	Ausable Bayfield Maitland Valley Source Protection Committee	2009-Mar-31	\$35,000
Maitland Valley Source Protection Area	Coordinating and supporting projects, undertaking communication initiatives, information management and consultation on the proposed Assessment Report.	Ausable Bayfield Maitland Valley Source Protection Committee	2012-Aug-20	\$1,600,000
Maitland Valley Source Protection Area	Delineating and applying vulnerability scores to WHPAs and IPZs; identifying issues, taking inventory of threats and assessing hazards in WHPAs and IPZs; assessing risk in WHPAs and IPZs.	Ausable Bayfield Maitland Valley Source Protection Committee	2010-Aug-20	\$1,000,000
Maitland Valley Source Protection Area	Pilot study for non-municipal drinking water systems.	Ausable Bayfield and Maitland Valley Source Protection Authorities	2009-Mar-31	\$37,500
Maitland Valley Source Protection Area	Delineating and applying vulnerability scores to HVAs and SGRAs; identifying issues, taking inventory of threats and assessing hazards in HVAs and SGRAs; assessing risk in HVAs and SGRAs.	Ausable Bayfield Maitland Valley Source Protection Committee	2011-Aug-20	\$100,000
<b>Municipal Residential Drinking Water Systems</b>				
<b>Drinking Water Systems By Municipal</b>				

Terms of Reference

<b>Resolution</b>	
<b>Drinking Water Systems By Band Resolution</b>	
<b>Fully or Partially Exempt Drinking Water Systems</b>	
<b>Drinking Water Systems Included By Minister</b>	

## The Work Plan to Complete the Source Protection Plan

By Source Protection Area/ Drinking Water System Name	Task	Assigned Lead(s)	Estimated Completion Date	Estimated Cost
Maitland Valley Source Protection Area	Coordinating and supporting projects, undertaking communications initiatives, information management, policy development to address drinking water threats (where required), development for monitoring and Great Lakes elements, establishing timelines for policy implementation and consultation on the overall source protection plan.	Ausable Bayfield Maitland Valley Source Protection Committee	2012-Aug-20	\$150,000
<b>Municipal Residential Drinking Water Systems</b>				
<b>Drinking Water Systems By Municipal Resolution</b>				
<b>Drinking Water Systems By Band Resolution</b>				
<b>Fully or Partially Exempt Drinking Water Systems</b>				
<b>Drinking Water Systems Included By Minister</b>				

**The Date the Source Protection Plan is to be Submitted to the Minister for Approval by the Maitland Valley Conservation Authority:**

2012-Aug-20

**Council Resolution(s) to Include Drinking Water System(s)**

**Council Resolution(s) to Exempt Municipal Residential Drinking Water System(s)**

# Detailed Information

## Detailed Information on Municipal Residential Drinking Water System(s)

Drinking Water System Type (planned or existing)	Drinking Water System Number	Drinking Water System Name	Owner	Operating Authority	Source Water Type (surface, ground, both)	Number of Wells
Existing	220008863	Whitechurch Well Supply	Huron-Kinloss, Township of	Veolia Water Canada	Groundwater	1
Number of Surface Water Intakes	Comments					
0	The Whitechurch Well System was constructed in 1961/62, and is servicing an approximate population of 92 residents. The community is currently serviced by a single well, located on Lot 3, Plan # 226, in the Township of Huron-Kinloss. It is approximately 15 cm in diameter, and was drilled to an approximate depth of 52 metres in August 1961.					

Drinking Water System Type (planned or existing)	Drinking Water System Number	Drinking Water System Name	Owner	Operating Authority	Source Water Type (surface, ground, both)	Number of Wells
Existing	210000238	Goderich Water Treatment Plant	Goderich, Town of	Veolia Water Canada	Surface Water	0
Number of Surface Water Intakes	Comments					
1	Services approximately 7,500 people.					

Drinking Water System Type (planned or existing)	Drinking Water System Number	Drinking Water System Name	Owner	Operating Authority	Source Water Type (surface, ground, both)	Number of Wells
Existing	220007757	Huron Sands Well Supply	Ashfield-Colborne-Wawanosh, Township of	Veolia Water Canada	Groundwater	1
Number of Surface Water Intakes	Comments					
0						

## Terms of Reference

Drinking Water System Type (planned or existing)	Drinking Water System Number	Drinking Water System Name	Owner	Operating Authority	Source Water Type (surface, ground, both)	Number of Wells
Existing	260007842	Dungannon Well Supply	Ashfield-Colborne-Wawanosh, Township of	Veolia Water Canada	Groundwater	2
<b>Number of Surface Water Intakes</b>	<b>Comments</b>					
0						

Drinking Water System Type (planned or existing)	Drinking Water System Number	Drinking Water System Name	Owner	Operating Authority	Source Water Type (surface, ground, both)	Number of Wells
Existing	220007508	Benmiller Inn Well Supply	Ashfield-Colborne-Wawanosh, Township of	Veolia Water Canada	Groundwater	1
<b>Number of Surface Water Intakes</b>	<b>Comments</b>					
0						

Drinking Water System Type (planned or existing)	Drinking Water System Number	Drinking Water System Name	Owner	Operating Authority	Source Water Type (surface, ground, both)	Number of Wells
Existing	220008499	Century Heights Subdivision Well Supply	Ashfield-Colborne-Wawanosh, Township of	Veolia Water Canada	Groundwater	2
<b>Number of Surface Water Intakes</b>	<b>Comments</b>					
0						

Drinking Water System Type (planned or existing)	Drinking Water System Number	Drinking Water System Name	Owner	Operating Authority	Source Water Type (surface, ground, both)	Number of Wells
Existing	260005281	Auburn Well Supply	Central Huron, Municipality of	Central Huron, Municipality of	Groundwater	1

## Terms of Reference

<b>Number of Surface Water Intakes</b>	<b>Comments</b>
0	The Auburn Well Supply is located in a small wooden structure and was established in or about 1961. The pumphouse contains the well, flow meter, chlorine analyser and alarms, pressure tank, chlorine injection pump and sampling taps. This well supplies water through a municipal distribution system to 15 customers and the Municipal Community Hall. An EA study has been done and a revised application for upgrades has been submitted. Upgrades have begun at the old concession booth for the relocation of the well house.

<b>Drinking Water System Type (planned or existing)</b>	<b>Drinking Water System Number</b>	<b>Drinking Water System Name</b>	<b>Owner</b>	<b>Operating Authority</b>	<b>Source Water Type (surface, ground, both)</b>	<b>Number of Wells</b>
Existing	220007837	McClinchey Well Supply	Central Huron, Municipality of	Central Huron, Municipality of	Groundwater	1

<b>Number of Surface Water Intakes</b>	<b>Comments</b>
0	A small pumphouse located at 79256 Fuller Drive. The building contains the well head. The distribution system consists of some year round as well as seasonal customers. A new pumphouse was constructed next to the existing old one. This was built prior to Central Huron acquiring this system. In the latter part of 2006, the following equipment was put in the new pumphouse: flow meter, sodium silicate and chlorine injection pumps, process piping, three new pressure tanks, chlorine analyser and alarms. Contact time is in the driveway to the pumphouse.

<b>Drinking Water System Type (planned or existing)</b>	<b>Drinking Water System Number</b>	<b>Drinking Water System Name</b>	<b>Owner</b>	<b>Operating Authority</b>	<b>Source Water Type (surface, ground, both)</b>	<b>Number of Wells</b>
Existing	220007793	Kelly Well Supply	Central Huron, Municipality of	Central Huron, Municipality of	Groundwater	1

<b>Number of Surface Water Intakes</b>	<b>Comments</b>
0	The Kelly Well Supply is located at 33823 Fullerview Circle and was established in 1983. The concrete block pumphouse contains 3 pressure tanks, flow meter, sodium silicate pump and a sodium hypochlorite pump. There is a chlorine analyzer with the associated alarms. The well head is located outside the pumphouse. The distribution system is made up of residential homes who are mostly year round customers.

<b>Drinking Water System Type (planned or existing)</b>	<b>Drinking Water System Number</b>	<b>Drinking Water System Name</b>	<b>Owner</b>	<b>Operating Authority</b>	<b>Source Water Type (surface, ground, both)</b>	<b>Number of Wells</b>
Existing	220001487	Brussels Well Supply	Huron East, Municipality of	American Water Services Canada	Groundwater	2

<b>Number of Surface</b>	<b>Comments</b>
--------------------------	-----------------

## Terms of Reference

<b>Water Intakes</b>	
0	Brussels Well #1 pump house located at 66 McCutcheon Street Brussels contains a 60 m deep, 250 mm dia. steel casing well with a submersible pump rated for 12.6 L/s. After chlorination by sodium hypochlorite injection this well discharges to a single cell reservoir with a capacity of 568 m <sup>3</sup> . Distribution pumps include an electric centrifugal rated at 12.6 L/s and a fire duty electric pump rated at 63 L/s at 21.3 m TDH. Brussels Well #2 pump house located at 238 Turnberry Street Brussels contains a 60 m deep, 250 mm dia. steel casing well with a vertical line shaft pump rated for 12.7 L/s. Primary disinfection is accomplished by an ultraviolet reactor, secondary disinfection by sodium hypochlorite injection. This well discharges directly to the distribution system.

<b>Drinking Water System Type (planned or existing)</b>	<b>Drinking Water System Number</b>	<b>Drinking Water System Name</b>	<b>Owner</b>	<b>Operating Authority</b>	<b>Source Water Type (surface, ground, both)</b>	<b>Number of Wells</b>
Existing	220001511	Seaforth Well Supply	Huron East, Municipality of	American Water Canada Corporation	Groundwater	2
<b>Number of Surface Water Intakes</b>	<b>Comments</b>					
0	The Seaforth Well Supply is comprised of three wells: two wells on Welsh Street in the Maitland Valley Source Protection Area and the Chalk Street well in the Ausable Bayfield Source Protection Area. The Welsh Street Well pump house located at 30 Welsh Street, Seaforth consists of 2 wells within 4 metres of each other. The main well is 86 m deep, 300 mm dia. steel casing with a pump rated for 34.7 L/s. After chlorination by sodium hypochlorite injection this well discharges directly to the distribution system. The second well on this site is 159 mm dia. steel casing submersible pump rated at 12 L/s.					

<b>Drinking Water System Type (planned or existing)</b>	<b>Drinking Water System Number</b>	<b>Drinking Water System Name</b>	<b>Owner</b>	<b>Operating Authority</b>	<b>Source Water Type (surface, ground, both)</b>	<b>Number of Wells</b>
Existing	220008257	Belgrave Well Supply	Morris-Turnberry, Municipality of	Veolia Water Canada	Groundwater	2
<b>Number of Surface Water Intakes</b>	<b>Comments</b>					
0						

<b>Drinking Water System Type (planned or existing)</b>	<b>Drinking Water System Number</b>	<b>Drinking Water System Name</b>	<b>Owner</b>	<b>Operating Authority</b>	<b>Source Water Type (surface, ground, both)</b>	<b>Number of Wells</b>
Existing	260082134	Humphrey Well Supply	North Huron, Township of	North Huron, Township of	Groundwater	1
<b>Number of Surface Water Intakes</b>	<b>Comments</b>					
0						

## Terms of Reference

<b>Water Intakes</b>	
0	

Drinking Water System Type (planned or existing)	Drinking Water System Number	Drinking Water System Name	Owner	Operating Authority	Source Water Type (surface, ground, both)	Number of Wells
Existing	220001496	Blyth Well Supply	North Huron, Township of	North Huron, Township of	Groundwater	2
<b>Number of Surface Water Intakes</b>	<b>Comments</b>					
0	A groundwater supply system serving the Village of Blyth in the County of Huron rated at a maximum daily flow of 1149 m <sup>3</sup> /d consisting of two wells, a reservoir and a High Lift Pumphouse.					

Drinking Water System Type (planned or existing)	Drinking Water System Number	Drinking Water System Name	Owner	Operating Authority	Source Water Type (surface, ground, both)	Number of Wells
Existing	220001502	Wingham Well Supply	North Huron, Township of	North Huron, Township of	Groundwater	2
<b>Number of Surface Water Intakes</b>	<b>Comments</b>					
0	A drinking water system serving the community of Wingham in the Township of North Huron, consisting of Well # 4 which is 96.6m deep, 356 mm diameter well equipped with one submersible pump rated 61 L/s complete with an above grade vented discharge head and piping from well to the adjacent reservoir and highlift pumping station. At pumping station and below grade single cell reservoir, Well # 4 has a flowmeter, flow control and isolation valves, chemical injection points, three highlift pumps and a firm capacity continuous chlorine residual analyzer, online turbidimeter, control system to provide control of the various equipment and monitoring, recording and alarming of operational parameters, inlet discharge and interconnecting piping and valves along with associated mechanical and electrical systems. Well # 3 is 102.1 m deep, 323 mm diameter well equipped with one turbine pump, standby diesel, diesel fuel storage tank, one chemical feed pump, one sodium hypochlorite solution storage tank, iron and manganese sequestering facilities consisting of a chemical metering pump, two polyphosphate storage tanks with drip tray, piping & valves, flow meter, discharge to distribution system and associated appurtenances.					

Drinking Water System Type (planned or existing)	Drinking Water System Number	Drinking Water System Name	Owner	Operating Authority	Source Water Type (surface, ground, both)	Number of Wells
Existing	220002663	Lucknow Well Supply	Huron-Kinloss, Township of	Veolia Water Canada	Groundwater	2

## Terms of Reference

Number of Surface Water Intakes	Comments
0	The Lucknow Well System consists of two drilled wells that separately feed into a common distribution system, and a water tower. Well # 4 was drilled to an approximate depth of 54.8 meters in 1959, Well # 5 was drilled to an approximate depth of 58.8 meters in 1967. Together they service a population of approximately 1100 people.

Drinking Water System Type (planned or existing)	Drinking Water System Number	Drinking Water System Name	Owner	Operating Authority	Source Water Type (surface, ground, both)	Number of Wells
Existing	220000512	Listowel Well Supply	North Perth, Municipality of	North Perth, Municipality of	Groundwater	3

Number of Surface Water Intakes	Comments
0	The Listowel water system consists of 3 ground water wells automatically controlled by a Supervisory Control and Data Acquisition (SCADA) system. The pressure in the distribution system is maintained by an elevated reservoir located at 580 Main Street West with a maximum capacity of 3182 m <sup>3</sup> . When the water level in the elevated reservoir drops to a predetermined set point the well pumps automatically start. Two chemical feed pumps at each well also start automatically adding predetermined quantities of Sodium Hypochlorite and Sodium Silicate to the water.

Drinking Water System Type (planned or existing)	Drinking Water System Number	Drinking Water System Name	Owner	Operating Authority	Source Water Type (surface, ground, both)	Number of Wells
Existing	220003975	Gowanstown Subdivision Well Supply	North Perth, Municipality of	North Perth, Municipality of	Groundwater	1

Number of Surface Water Intakes	Comments
0	The Gowanstown water system consists of one ground water well housed in a concrete block building located west of Maple Lane. Two new 454 L pre-charged pressure tanks provide pressure to the distribution system when the well pump is not operating. When the pressure in the system drops to a predetermined level the well pump automatically starts and recharges the pressure tanks. Two chemical feed pumps also start automatically adding predetermined quantities of Sodium Hypochlorite and Sodium Silicate to the water.

Drinking Water System Type (planned or existing)	Drinking Water System Number	Drinking Water System Name	Owner	Operating Authority	Source Water Type (surface, ground, both)	Number of Wells
Existing	260065260	Atwood Well Supply	North Perth,	North Perth, Municipality	Groundwater	2

## Terms of Reference

			Municipality of	of		
<b>Number of Surface Water Intakes</b>	<b>Comments</b>					
0	The Atwood Well Supply receives raw water from Well 1(Danbrook) located adjacent to the pumphouse and Well 2 (Smith) located at 102 Parkview Crescent. All treatment of raw water from both sources takes place at the Atwood pumphouse where Sodium Hypochlorite is added for disinfection and Sodium Silicate is added for iron sequestering. The treated water is discharged to a reservoir. Three high lift pumps deliver the treated water from the reservoir to the distribution system via five hydropneumatic pressure tanks. The hydropneumatic tanks reduce the cycling of the high lift pumps and maintain pressure within the distribution system.					

Drinking Water System Type (planned or existing)	Drinking Water System Number	Drinking Water System Name	Owner	Operating Authority	Source Water Type (surface, ground, both)	Number of Wells
Existing	220000077	Harriston Well Supply	Minto, Town of	Minto, Town of	Groundwater	3
<b>Number of Surface Water Intakes</b>	<b>Comments</b>					
0						

Drinking Water System Type (planned or existing)	Drinking Water System Number	Drinking Water System Name	Owner	Operating Authority	Source Water Type (surface, ground, both)	Number of Wells
Existing	220000059	Palmerston Well Supply	Minto, Town of	Minto, Town of	Groundwater	3
<b>Number of Surface Water Intakes</b>	<b>Comments</b>					
0						

Drinking Water System Type (planned or existing)	Drinking Water System Number	Drinking Water System Name	Owner	Operating Authority	Source Water Type (surface, ground, both)	Number of Wells
Existing	260034996	Molesworth Well Supply	North Perth, Municipality of	North Perth, Municipality of	Groundwater	1
<b>Number of Surface Water Intakes</b>	<b>Comments</b>					
0	The Molesworth Water System has 43 service connections and consists of a drilled well, a chlorination system using sodium hypochlorite, an iron sequestering system using sodium polyphosphate, a flow meter, 4 large pressure tanks, and chemical dosing pumps. When pressure drops in the distribution system to a predetermined level, the well pump automatically starts and recharges the pressure tanks. Two chemical feed pumps also start automatically adding predetermined quantities of Sodium Hypochlorite and Sodium Silicate to the water.					

**Detailed Information on Drinking Water System(s) Included by Municipal Council Resolution  
(Not Municipal Residential Drinking Water Systems)**

**Detailed Information on Drinking Water System(s) Included by Bands Serving Reserve(s)  
(Not Municipal Residential Drinking Water Systems)**

**Detailed Information on Fully or Partially Exempted Municipal Residential Drinking Water System(s)**

**Detailed Information on Drinking Water System(s) Included by the Minister of the Environment  
(Not Municipal Residential Drinking Water Systems)**

## Detailed Work Plan to Complete the Assessment Report

By Source Protection Area	Task	Assigned Lead(s)	Estimated Start Date	Estimated Completion Date
Maitland Valley Source Protection Area	Undertaking a watershed characterization	Ausable Bayfield and Maitland Valley Source Protection Authorities	2005-Feb-07	2008-Apr-30
<b>Comments</b>		<b>Defined Geographic Area</b>		<b>Estimated Cost</b>
Hiring several consultants and internal staff costs. Costs also include peer review, printing and capacity building presentations to staff and SPC members.		Ausable Bayfield Maitland Valley Source Protection Region.		\$75,000

By Source Protection Area	Task	Assigned Lead(s)	Estimated Start Date	Estimated Completion Date
Maitland Valley Source Protection Area	Conducting a conceptual water budget	Ausable Bayfield and Maitland Valley Source Protection Authorities	2005-Mar-07	2006-Mar-31
<b>Comments</b>		<b>Defined Geographic Area</b>		<b>Estimated Cost</b>
Hiring consultants, peer review, trial modeling, printing.		Ausable Bayfield Maitland Valley Source Protection Region.		\$42,500

By Source Protection Area	Task	Assigned Lead(s)	Estimated Start Date	Estimated Completion Date
Maitland Valley Source Protection Area	Conducting a tier 1 water budget analysis and stress assessment	Ausable Bayfield and Maitland Valley Source Protection Authorities	2006-Mar-06	2008-Apr-30
<b>Comments</b>		<b>Defined Geographic Area</b>		<b>Estimated Cost</b>
Hiring consultants, peer review, trial modeling, and printing.		The Tier 1 Water Budget includes the whole Source Protection Region divided into subwatersheds. In the Ausable Bayfield, these subwatersheds are Upper Nine Mile, Lower Maitland, North Maitland, Little Maitland, Middle Maitland, South Maitland, MVCA Gullies South and MVCA Gullies North.		\$145,000

By Source Protection Area	Task	Assigned Lead(s)	Estimated Start Date	Estimated Completion Date
Maitland Valley Source Protection Area	Conducting a tier 2 water budget analysis and stress assessment	Ausable Bayfield Maitland Valley Source Protection Committee	2008-Apr-01	2009-Mar-31
<b>Comments</b>		<b>Defined Geographic Area</b>		<b>Estimated Cost</b>
Modelling of Bayfield Gullies subwatershed, writing and printing document.		Goderich subwatershed		\$35,000

## Terms of Reference

By Source Protection Area	Task	Assigned Lead(s)	Estimated Start Date	Estimated Completion Date
Maitland Valley Source Protection Area	Coordinating and supporting projects, undertaking communication initiatives, information management and consultation on the proposed Assessment Report.	Ausable Bayfield Maitland Valley Source Protection Committee	2005-Feb-07	2012-Aug-20
<b>Comments</b>		<b>Defined Geographic Area</b>		<b>Estimated Cost</b>
Staff costs, project management, consultant costs, communications materials, office supplies, office rental, Source Protection Committee per diem and meeting funds, Working Group meeting funds, consultation meetings and advertising.		Maitland Valley Source Protection Area.		\$1,600,000

By Source Protection Area	Task	Assigned Lead(s)	Estimated Start Date	Estimated Completion Date
Maitland Valley Source Protection Area	Delineating and applying vulnerability scores to WHPAs and IPZs; identifying issues, taking inventory of threats and assessing hazards in WHPAs and IPZs; assessing risk in WHPAs and IPZs.	Ausable Bayfield Maitland Valley Source Protection Committee	2006-Apr-03	2010-Aug-20
<b>Comments</b>		<b>Defined Geographic Area</b>		<b>Estimated Cost</b>
Technical money for modelling, calculating vulnerability scores, window assessment, staff information meetings.		Wellhead protection areas (WHPAs) and intake protection zones (IPZs) in the Maitland Valley Source Protection Area.		\$1,000,000

By Source Protection Area	Task	Assigned Lead(s)	Estimated Start Date	Estimated Completion Date
Maitland Valley Source Protection Area	Pilot study for non-municipal drinking water systems.	Ausable Bayfield and Maitland Valley Source Protection Authorities	2008-Apr-01	2009-Mar-31
<b>Comments</b>		<b>Defined Geographic Area</b>		<b>Estimated Cost</b>
Hiring consultants, modelling, mapping, inventorying issues, assessing threats, creation of report on pilot study.		1-2 hamlets in Maitland Valley Source Protection Area.		\$37,500

By Source Protection Area	Task	Assigned Lead(s)	Estimated Start Date	Estimated Completion Date
Maitland Valley Source Protection Area	Delineating and applying vulnerability scores to HVAs and SGRAs; identifying issues, taking inventory of threats and assessing hazards in	Ausable Bayfield Maitland Valley Source Protection Committee	2009-Apr-06	2011-Aug-20

Terms of Reference

	HVAs and SGRAs; assessing risk in HVAs and SGRAs.			
<b>Comments</b>		<b>Defined Geographic Area</b>	<b>Estimated Cost</b>	
Technical money for modelling, calculating vulnerability scores, window assessment, staff information meetings.		Highly vulnerable areas (HVAs) and significant groundwater recharge areas (SGRAs) in the Maitland Valley Source Protection Area.	\$100,000	

## Detailed Work Plan to Complete the Source Protection Plan

By Source Protection Area	Task	Assigned Lead(s)	Estimated Start Date	Estimated Completion Date
Maitland Valley Source Protection Area	Coordinating and supporting projects, undertaking communications initiatives, information management, policy development to address drinking water threats (where required), development for monitoring and Great Lakes elements, establishing timelines for policy implementation and consultation on the overall source protection plan.	Ausable Bayfield Maitland Valley Source Protection Committee	2009-Apr-01	2012-Aug-20
<b>Comments</b>		<b>Defined Geographic Area</b>		<b>Estimated Cost</b>
Consultation and meeting costs, ad hoc working group meetings, planners technical working group.		Maitland Valley Source Protection Area.		\$150,000

## Summary of Financial Statistics

	Tasks Done by Source Protection Area or Drinking Water System	Estimated Costs for Tasks Under the Assessment Report	Estimated Costs for Tasks Under the Source Protection Plan	Subtotal
<b>Municipal Residential Drinking Water Systems</b>				
	Atwood Well Supply			
	Auburn Well Supply			
	Belgrave Well Supply			
	Benmiller Inn Well Supply			
	Blyth Well Supply			
	Brussels Well Supply			
	Century Heights Subdivision Well Supply			
	Dungannon Well Supply			
	Goderich Water Treatment Plant			
	Gowanstown Subdivision Well Supply			
	Harriston Well Supply			
	Humphrey Well Supply			
	Huron Sands Well Supply			
	Kelly Well Supply			
	Listowel Well Supply			
	Lucknow Well Supply			
	McClinchey Well Supply			
	Molesworth Well Supply			
	Palmerston Well Supply			
	Seaforth Well Supply			
	Whitechurch Well Supply			
	Wingham Well Supply			
<b>Drinking Water Systems By Municipal Resolution</b>				
<b>Drinking Water Systems By Band Resolutions</b>				

Terms of Reference

<b>Drinking Water Systems Included By Minister</b>				
<b>Total Estimated Costs in the Maitland Valley Source Protection Area</b>		<b>\$3,035,000</b>	<b>\$150,000</b>	<b>\$3,185,000</b>

## Estimated Costs for Tasks by Fiscal Year

Fiscal Year defined as April 1 to March 31

Drinking Water System Category / Source Protection Area	Tasks	Fiscal Year 04/05	Fiscal Year 05/06	Fiscal Year 06/07	Fiscal Year 07/08	Fiscal Year 08/09	Fiscal Year 09/10	Fiscal Year 10/11	Fiscal Year 11/12	Fiscal Year 12/13
<b>Maitland Valley Source Protection Area</b>										
	Undertaking a watershed characterization	\$15,000	\$15,000	\$15,000	\$15,000	\$15,000	\$0	\$0	\$0	\$0
	Conducting a conceptual water budget	\$21,250	\$21,250	\$0	\$0	\$0	\$0	\$0	\$0	\$0
	Conducting a tier 1 water budget analysis and stress assessment	\$0	\$36,250	\$36,250	\$36,250	\$36,250	\$0	\$0	\$0	\$0
	Conducting a tier 2 water budget analysis and stress assessment	\$0	\$0	\$0	\$0	\$35,000	\$0	\$0	\$0	\$0
	Coordinating and supporting projects, undertaking communication initiatives, information management and consultation on the proposed Assessment Report.	\$177,778	\$177,778	\$177,778	\$177,778	\$177,778	\$177,778	\$177,778	\$177,778	\$177,778
	Delineating and applying vulnerability scores to HVAs and SGRAs; identifying issues, taking inventory of threats and assessing hazards in HVAs and SGRAs; assessing risk in HVAs and SGRAs.	\$0	\$0	\$0	\$0	\$0	\$33,333	\$33,333	\$33,333	\$0
	Delineating and applying vulnerability scores to WHPAs and IPZs; identifying issues, taking inventory of threats and assessing hazards in WHPAs and IPZs; assessing risk in WHPAs and IPZs.	\$0	\$0	\$200,000	\$200,000	\$200,000	\$200,000	\$200,000	\$0	\$0

Terms of Reference

Drinking Water System Category / Source Protection Area	Tasks	Fiscal Year 04/05	Fiscal Year 05/06	Fiscal Year 06/07	Fiscal Year 07/08	Fiscal Year 08/09	Fiscal Year 09/10	Fiscal Year 10/11	Fiscal Year 11/12	Fiscal Year 12/13
	Pilot study for non-municipal drinking water systems.	\$0	\$0	\$0	\$0	\$37,500	\$0	\$0	\$0	\$0
	Coordinating and supporting projects, undertaking communications initiatives, information management, policy development to address drinking water threats (where required), development for monitoring and Great Lakes elements, establishing timelines for policy implementation and consultation on the overall source protection plan.	\$0	\$0	\$0	\$0	\$0	\$37,500	\$37,500	\$37,500	\$37,500
<b>Municipal Residential Drinking Water Systems</b>										
<b>Drinking Water Systems By Municipal Resolution</b>										
<b>Drinking Water Systems by Band Resolution</b>										
<b>Drinking Water Systems Included by Minister</b>										
<b>Fiscal Year Total</b>		<b>\$214,028</b>	<b>\$250,278</b>	<b>\$429,028</b>	<b>\$429,028</b>	<b>\$501,528</b>	<b>\$448,611</b>	<b>\$448,611</b>	<b>\$248,611</b>	<b>\$248,611</b>

## Terms of Reference

## Process Checklist

Regulatory Process	Completion Date	Done By
Give a copy of the comments on proposed terms of reference to the source protection committee.	2008-Oct-20	SPAuthority
Make the draft proposed terms of reference available at other locations.	2008-May-07	SPCommittee
Make the proposed terms of reference available at other locations.	2008-Sep-03	SPCommittee
Notice for consultation on draft proposed ToR includes information on public meeting scheduled at least 21 days after newspaper notice is published.	2008-May-07	SPCommittee
Notify band Chiefs on the commencement of the terms of reference.	2008-Jan-14	SPCommittee
Notify municipal clerks on the commencement of the terms of reference.	2008-Jan-07	SPCommittee
Post proposed terms of reference on the Internet for 30 days.	2008-Sep-03	SPCommittee
Post draft proposed terms of reference on Internet.	2008-May-07	SPCommittee
Provide a copy of draft to the chiefs of bands whose reserves are located in the source protection area.	2008-May-07	SPCommittee
Provide a copy of draft proposed terms of reference to the clerks of municipalities located in the source protection area.	2008-May-07	SPCommittee
Provide a copy of proposed terms of reference to the source protection authority.	2008-Aug-20	SPCommittee
Provide a copy of proposed terms of reference to the chiefs of bands whose reserves are located in the source protection area.	2008-Sep-03	SPCommittee
Provide a copy of proposed terms of reference to the clerks of municipalities located in the source protection area.	2008-Sep-03	SPCommittee
Provide copy of draft proposed ToR to chairs of SPCs who have been listed in table that describes matters that affect other source protection areas.	2008-May-07	SPCommittee
Provide any unresolved comments from municipalities and bands to the Minister as part of the approval package for the proposed terms of reference.	2008-Oct-20	SPAuthority
Provide any unresolved comments from municipalities and bands to the source protection authority on the draft proposed terms of reference.	2008-Aug-20	SPCommittee
Publish newspaper notice to publicly view draft proposed ToR on Internet and at other locations (as determined by the source protection committee).	2008-May-07	SPCommittee
Receive comments from the 30 day Internet posting from the public, municipalities, bands, and other stakeholders.	2008-Oct-02	SPAuthority
Notice for consultation on draft proposed ToR includes requests for comments submitted within 35 days of notice published in the newspaper.	2008-May-07	SPCommittee
Municipal council resolutions have been passed agreeing upon work.	Not Applicable	SPCommittee
Give copy of draft proposed ToR to groups created pursuant to Great Lakes Water Quality Agreement & involved in developing/implementing RAPs & LaMPs.	Not Applicable	SPCommittee

Terms of Reference

Make provisions to consider Great Lakes Agreements.	Not Applicable	SPCommittee
---	----------------	-------------

## Terms of Reference

**Appendix: Full Task Descriptions**

<b>Subject Area</b>	<b>Task Name</b>	<b>Full Task Description</b>
Assessment Report Preparation	Coordinating and supporting projects for the assessment report	Undertaking administrative support, staffing, management support, and training necessary to provide project coordination for the assessment report components and direct support to the source protection committee.
Assessment Report Preparation	Undertaking communications initiatives for the assessment report	Local area engagement, outreach and creation of communications products that support the assessment report process.
Assessment Report Preparation	Information management for the assessment report preparation	Conducting overall data management, data sharing agreements, standards, mapping, software and maintenance.
Assessment Report Preparation	Undertaking a watershed characterization	Identifying and describing watersheds in the source protection area. May include water quality analysis and peer review for water quality analysis. Details on how to complete this task will be available in the Assessment Report regulation, Director's rules, and guidance when they are developed.
Assessment Report Preparation	Conducting a conceptual water budget	Describing the overall flow system dynamics for each watershed in the source protection area taking into consideration surface water and groundwater features, land cover (e.g. proportion of urban vs. rural uses), human-made structures (e.g. dams, channel diversions, water crossings), and water takings. Details on how to complete this task will be available in the Assessment Report regulation, Director's rules, and guidance when they are developed.
Assessment Report Preparation	Conducting a tier 1 water budget analysis and stress assessment	Conducting a tier 1 water budget analysis, stress assessment, and delineation of significant groundwater recharge areas. May also include the identification of water quantity concerns and an analysis of uncertainty. Details on how to complete this task will be available in the Assessment Report regulation, Director's rules, and guidance when they are developed.
Assessment Report Preparation	Conducting a tier 2 water budget analysis and stress assessment	If determined necessary from a tier 1 water budget analysis and stress assessment, conducting a tier 2 water budget analysis and stress assessment, and refining the delineation of significant groundwater recharge areas. May also include the identification of water quantity concerns and an analysis of uncertainty. Details on how to complete this task will be available in the Assessment Report regulation, Director's rules, and guidance when they are developed.
Assessment Report Preparation	Conducting a tier 3 water budget analysis and water quantity risk assessment	If determined necessary from a tier 2 water budget analysis and stress assessment, conducting a tier 3 water budget analysis and water quantity risk assessment. May include identifying significant, moderate and low water quantity threats. May also include consultation with property owners/residents/stakeholders impacted by a significant drinking water threat scoring and an analysis of uncertainty. Details on how to complete this task will be available in the Assessment Report regulation, Director's rules, and guidance when they are developed.
Assessment Report Preparation	Delineating and applying vulnerability scores to HVAs	Delineating the location and extent of highly vulnerable aquifers in the source protection area and applying vulnerability scores. An uncertainty analysis may be included in this task. Details on how to complete this task will be available in the Assessment Report regulation, Director's rules, and guidance when they are developed.

## Terms of Reference

Assessment Report Preparation	Identifying issues, inventorying threats and assessing hazards in HVAs	Listing and describing drinking water quality issues, inventorying threats and assessing hazards (including uncertainty analysis) in the highly vulnerable aquifers. Details on how to complete this task will be available in the Assessment Report regulation, Director's rules, and guidance when they are developed.
Assessment Report Preparation	Assessing risks in HVAs	Identifying any significant, moderate, low, and negligible drinking water threats, undertaking an issues evaluation, and analysing uncertainty in highly vulnerable aquifers. Details on how to complete this task will be available in the Assessment Report regulation, Director's rules, and guidance when they are developed.
Assessment Report Preparation	Applying vulnerability scores to SGRAs	Applying vulnerability scores to significant groundwater recharge areas in the source protection area (delineated in the water budget process). Details on how to complete this task will be available in the Assessment Report regulation, Director's rules, and guidance when they are developed.
Assessment Report Preparation	Identifying issues, inventorying threats and assessing hazards in SGRAs	Listing and describing drinking water quality issues, inventorying threats and assessing hazards (including uncertainty analysis) in the significant groundwater recharge areas. Details on how to complete this task will be available in the Assessment Report regulation, Director's rules, and guidance when they are developed.
Assessment Report Preparation	Assessing risk in SGRAs	Identifying any significant, moderate, low, and negligible drinking water threats, undertaking an issues evaluation, and analysing uncertainty in significant groundwater recharge areas. Details on how to complete this task will be available in the Assessment Report regulation, Director's rules, and guidance when they are developed.
Assessment Report Preparation	Delineating and applying vulnerability scores to WHPAs or IPZs	Delineating the location and extent of the vulnerable area around a drinking water system (wellhead protection areas for drinking water systems using groundwater or intake protection zones for drinking water systems withdrawing from surface water) in the source protection area and applying a vulnerability score. Uncertainty analysis and peer review may be required. In addition, consultation with property owners/residents/stakeholders affected by the delineation and scoring for these two vulnerable areas may be required. Details on how to complete this task will be available in the Assessment Report regulation, Director's rules, and guidance when they are developed.
Assessment Report Preparation	Identifying issues, inventorying threats and assessing hazards in WHPAs or IPZs	Listing and describing drinking water quality issues, inventorying threats and assessing hazards (including uncertainty analysis) in wellhead protection areas and/or intake protection zones. Details on how to complete this task will be available in the Assessment Report regulation, Director's rules, and guidance when they are developed.
Assessment Report Preparation	Assess risk in WHPAs or IPZs	Identifying any significant, moderate, low, and negligible drinking water threats, undertaking an issues evaluation, and analysing uncertainty in wellhead protection areas or intake protection zones. Consultation may be required with stakeholders impacted by significant drinking water threats scoring. Consultation with adjacent source protection areas or regions may also be required for shared Great Lakes drinking water issues. Details on how to complete this task will be available in the Assessment Report regulation, Director's rules, and guidance when they are developed.
Assessment Report Preparation	Consultation on the overall proposed assessment report	Meeting the legislative and regulatory requirements on the consultation and submission process of the proposed assessment report. Details on how to complete this task will be available in the Assessment Report regulation, Director's rules, and guidance when they are developed.
Assessment Report		If required, add other tasks to complete the assessment report. Describe in detail.

## Terms of Reference

Preparation		
Source Protection Plan Preparation	Coordinating and supporting projects for the source protection plan (SPP)	Undertaking administrative support, staffing, management support, and training necessary to provide project coordination for the source protection plan components and direct support to the source protection committee.
Source Protection Plan Preparation	Undertaking communications initiatives for the source protection plan	Local area engagement, outreach and creation of communications products that support the source protection plan process.
Source Protection Plan Preparation	Information management for source protection plan preparation	Conducting overall data management, data sharing agreements, standards, mapping, software and maintenance.
Source Protection Plan Preparation	Policy development to address drinking water threats (where required and/or permissible in Act/Regs)	Policy development to address drinking water threats (where required and/or permissible in the Act and source protection plan regulation). Detailed requirements and guidance will be provided in the Source Protection Plan regulation and guidance document when they are developed.
Source Protection Plan Preparation	Policy development for monitoring (where required, advisable and/or permissible in Act & Regs)	Policy development for monitoring activities (where required, advisable and/or permissible in the Act and source protection plan regulation), including determining who is responsible for implementing these policies. Detailed requirements and guidance will be provided in the Source Protection Plan regulation and guidance document when they are developed.
Source Protection Plan Preparation	Policy development for Great Lakes elements (where required/permissible in Act & Regs)	Policy development for Great Lakes associated elements (where directed by the Minister and required or permissible in the Act and source protection plan regulation), including monitoring policies to assist in implementing and determining the effectiveness of achieving Great Lake target(s) policies, determining who is responsible for implementing those policies, and determining the need to identify any of these policies as "designated Great Lakes policies". Detailed requirements and guidance will be provided in the Source Protection Plan regulation and guidance document when they are developed.
Source Protection Plan Preparation	Establishing timelines for policy implementation	Establishing timelines for policy implementation after all policies for the SPP are developed, giving consideration to the policies developed, key players affected, capacity for implementation, the assessed risks, and natural, social, and economic considerations, including local community interests/needs. Detailed requirements and guidance will be provided in the Source Protection Plan regulation and guidance document when they are developed.
Source Protection Plan Preparation	Consultation on the overall proposed source protection plan	Consultation and submission process of the overall proposed source protection plan. Details on how to conduct the consultations on the overall proposed source protection plan will be provided in the Source Protection Plan regulation and guidance document when they are developed.
Source Protection Plan Preparation		If required, add other tasks to complete the source protection plan. Describe in detail.